



APPENDIX E

Public Scoping Meeting Materials

Public Scoping Meeting Presentation
Public Scoping Meeting Boards
Public Scoping Meeting Handout (English and Spanish)
Public Scoping Meeting Comment Form (English and Spanish)
Scoping Online Survey



I-11 Corridor

Tier 1 Environmental Impact Statement

Scoping Meeting



June 2016

Purpose of Scoping Meeting

- Federal environmental review process
- Share information about process
- Seek input on “scope” and content
- Describe opportunities for involvement



History of I-11 Corridor



- Intermodal Surface Transportation Efficiency Act 1991
- North American Free Trade Agreement 1993
- CANAMEX Trade Corridor 1995
- National Highway System High Priority Corridor 2012
- I-11 and Intermountain West Corridor Study 2014
- Fixing America's Surface Transportation Act 2015
- **Federal Environmental Review Process 2016**

Federal Lead Agency:
Federal Highway Administration (FHWA)



Local Lead Agency:
Arizona Department of Transportation



Alternatives Selection
Report (ASR) and
Tier 1 Environmental
Impact Statement (EIS)



Study Goal and Objective



Complete ASR and Tier 1 EIS



Reach consensus on
Selected Corridor Alternative
from Nogales to Wickenburg

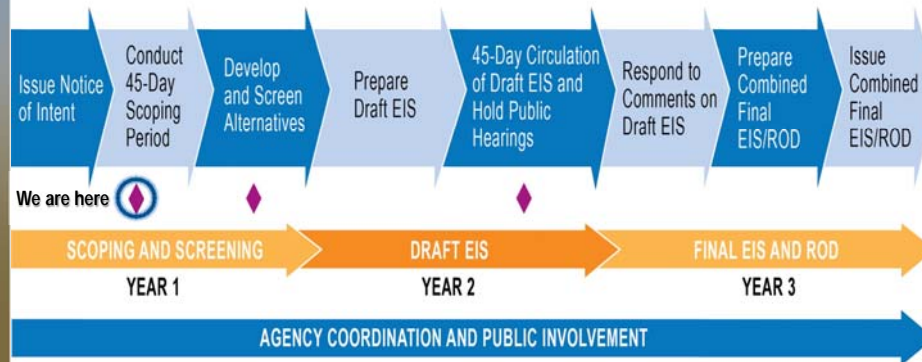


Set stage for future
proposed projects



Environmental Review Process

Tier 1 Environmental Impact Statement Process



◆ Official Agency and Public Opportunity for Comment during Tier 1 EIS Process

EIS = Environmental Impact Statement

ROD = Record of Decision



What is Scoping?

- **Early step in environmental review process**
 - ▶ Allows for early coordination and outreach
- **Notify public, agencies, and tribal communities**
 - ▶ Tier 1 EIS is being prepared
 - ▶ Solicit input on overall process and corridor
- **Guide “scope” and content of Tier 1 EIS**
 - ▶ Purpose and need
 - ▶ Alternatives to be studied
 - ▶ Impacts to be evaluated
 - ▶ Evaluation methods to be used



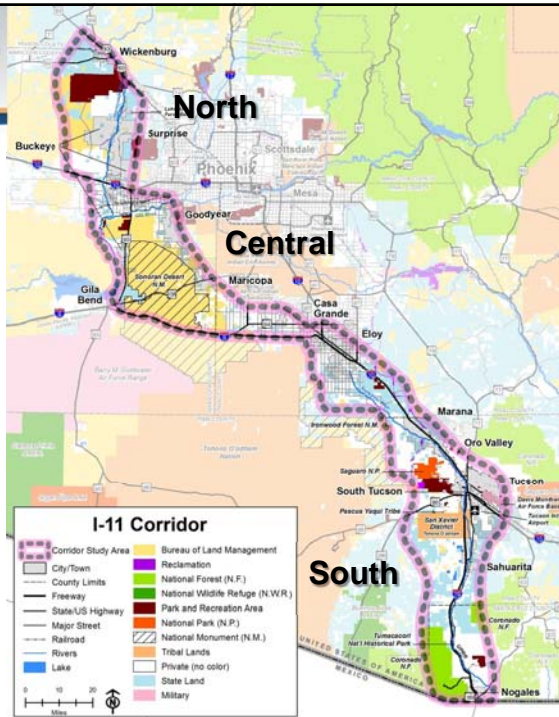
What are the Goals for I-11?

- Provide access-controlled, north-south transportation corridor
- Connect key metropolitan areas and markets in Arizona with Mexico and Canada
- Support improved regional mobility for movement of people, goods, and homeland security
- Provide enhanced transportation opportunities for economic vitality

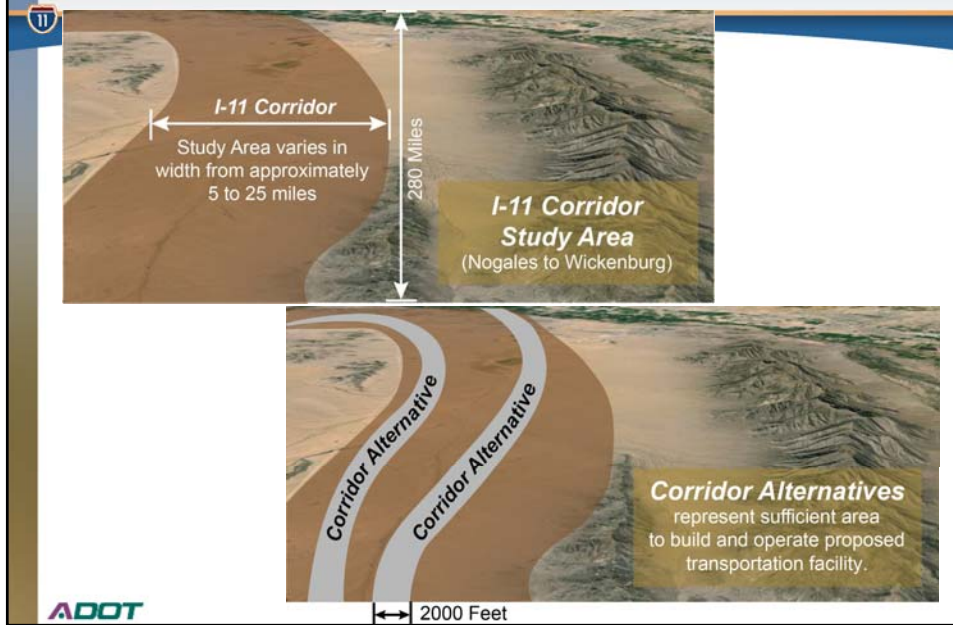


What is being Studied?

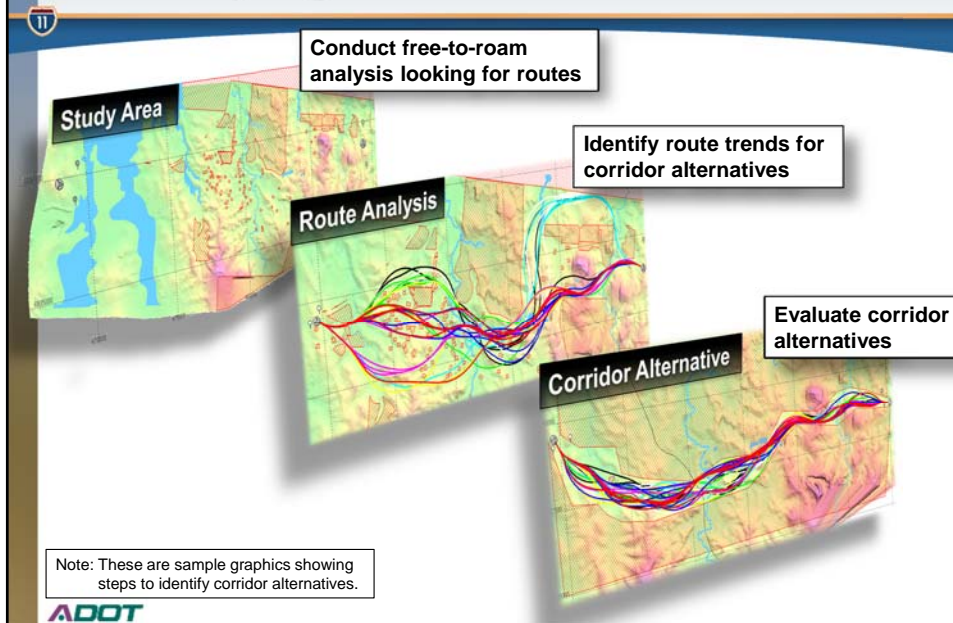
- 280-mile study area from Nogales to Wickenburg
- 2,000-foot corridor alternatives
- Proposed transportation facility
- Phased Implementation Plans



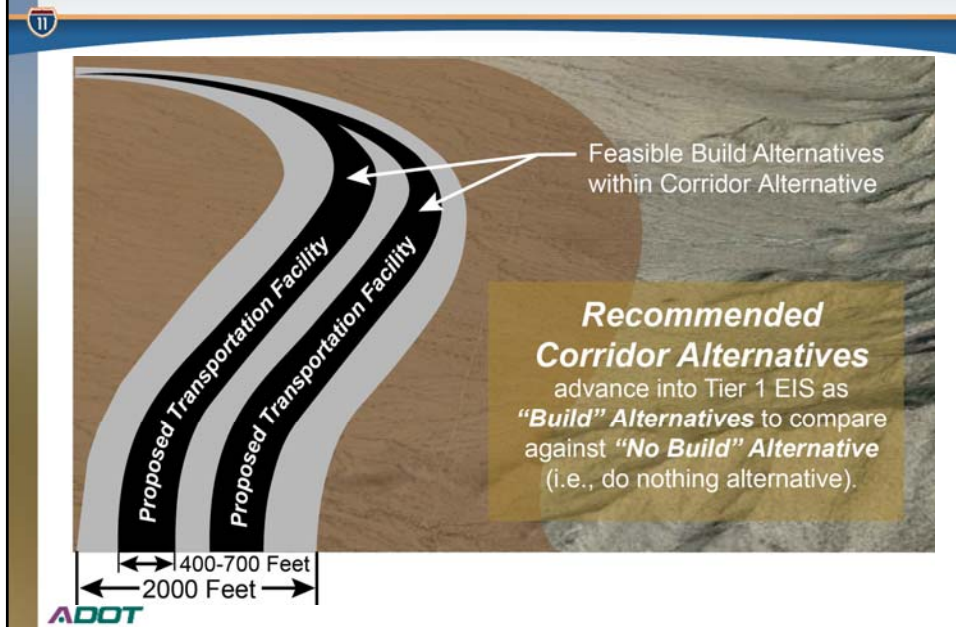
Corridor Alternatives



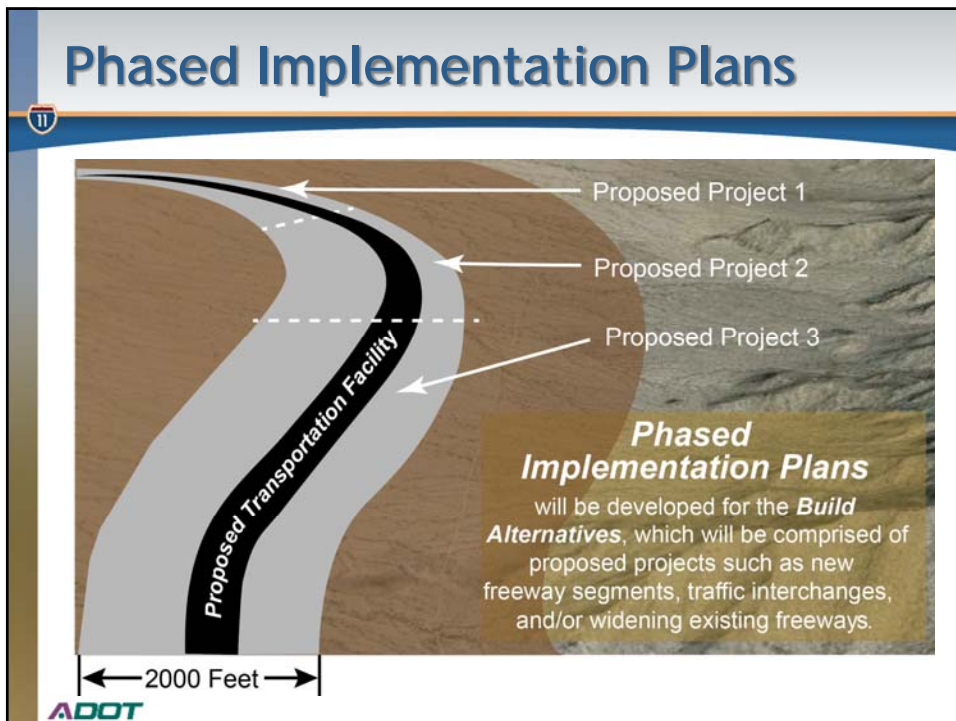
Identifying Corridor Alternatives



Recommended Corridor Alternatives



Phased Implementation Plans



What Topics will be Studied?



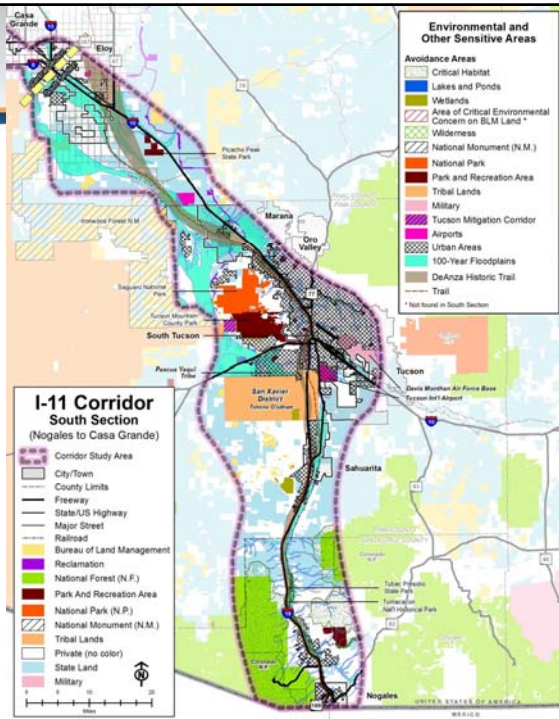
- Air quality
- Biological resources
- Economic impacts
- Geology, soils, and farmlands
- Hazardous materials
- Historic and archaeological
- Land use and neighborhoods
- Noise and vibration
- Parks and recreation
- Title VI and environmental justice
- Transportation
- Visual and aesthetics
- Water resources



South

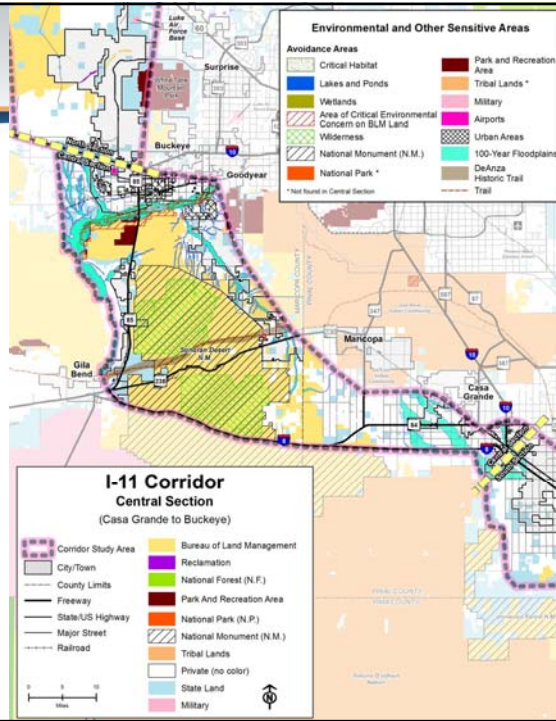


- Critical habitat
- Cultural resources
- Historic trail
- Parks and recreation
- Rivers and floodplains
- Tribal lands
- Urbanized areas
- Wildlife and mitigation corridors



Central

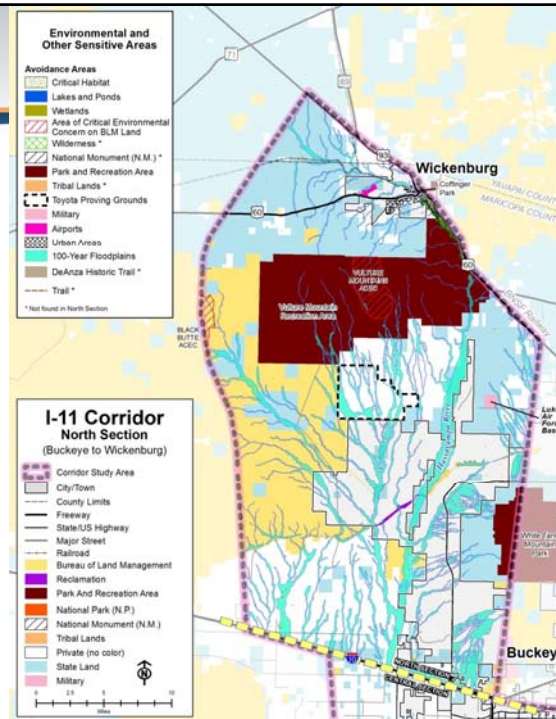
- Areas of critical environmental concern
- Cultural resources
- Historic trail
- National monument
- Parks and recreation
- Rivers and floodplains
- Wilderness



ADOT

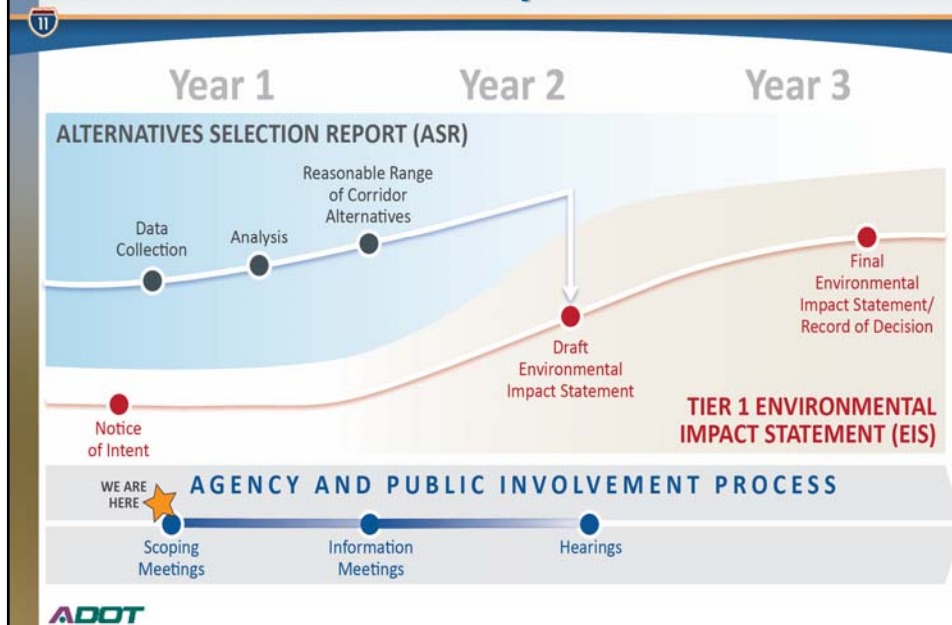
North

- Areas of critical environmental concern
- Cultural resources
- Parks and recreation
- Rivers and floodplains
- Other avoidance areas



ADOT

What are Next Steps?



What Questions will the Tier 1 EIS Answer?

- **Reach consensus on *Selected Corridor Alternative* for I-11 Corridor**
 - ▶ Potential social, economic, and natural environmental impacts
 - ▶ Type of vehicular transportation facility
 - ▶ Potential multimodal facility (rail and utility) opportunities
 - ▶ Proposed projects for Phased Implementation Plan

The Tier 1 EIS will provide a roadmap for advancing proposed projects in the future.

How Can You Participate?



■ Scoping meetings

- ▶ Review information on display boards and handouts
- ▶ Provide written comments on comment cards
- ▶ Provide comments verbally to court reporter

■ Additional opportunities



I-11ADOTStudy@hdrinc.com



1-844-544-8049 (bilingual)



i11study.com/Arizona (on-line survey)



Interstate 11 Tier 1 EIS Study Team
c/o ADOT Communications
1655 W. Jackson Street, Mail Drop 126F
Phoenix, AZ 85007

■ Future public meetings and hearings



**Please
submit
scoping
comments
by
July 8, 2016**



I-11 Corridor

Tier 1 Environmental Impact Statement



THANK YOU!!





WELCOME

TO THE
I-11 CORRIDOR TIER 1
ENVIRONMENTAL
IMPACT STATEMENT

SCOPING MEETING

Please Sign In



Welcome to the I-11 Corridor Tier 1 EIS



At the scoping meeting you can provide input to help shape the I-11 Corridor Tier 1 Environmental Impact Statement (EIS).



Tonight's agenda:

- 4:00 pm: sign in
- 4:15 pm: presentation starts
- 4:30 pm: open house (talk to staff, review information, and provide input)



To shape the future of transportation in Arizona, provide your input on:

- Purpose and need
- Alternatives to be studied
- Impacts to be evaluated
- Evaluation methods to be used



Please fill out a comment card before you leave or go online after the meeting to i11study.com/Arizona. We want to hear from you to help determine the future of the I-11 Corridor!



How Can You Help?

At Today's Meeting:

Review information on display boards and handouts

Provide written comments on comment cards

Provide verbal comments to court reporter

Throughout the study, submit comments through the following methods:



I-11ADOTStudy@hdrinc.com



1-844-544-8049 (bilingual)



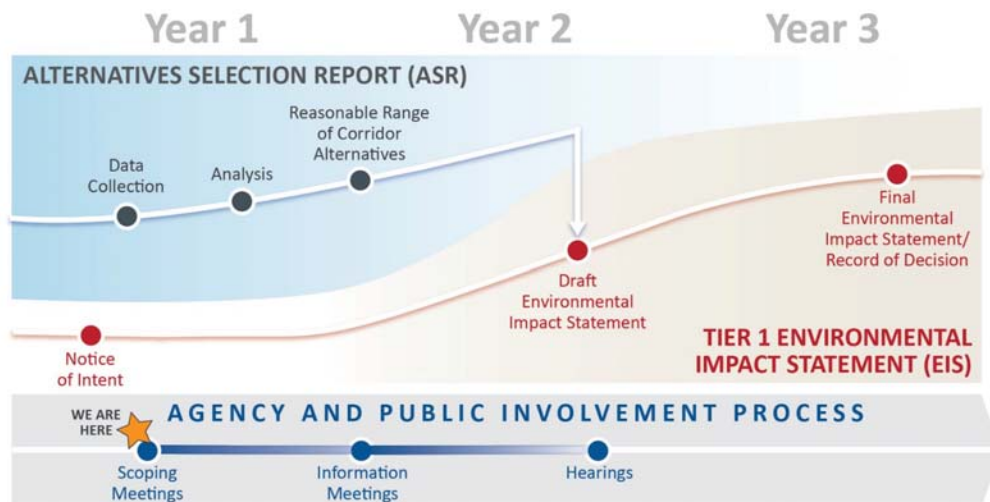
i11study.com/Arizona



Interstate 11 Tier 1 EIS Study Team
c/o ADOT Communications
1655 W. Jackson St., Mail Drop 126F
Phoenix, AZ 85007

Please Submit Scoping Comments by July 8, 2016

Stay Engaged at Future Meetings:



ALL INFORMATION PRESENTED IS PRELIMINARY AND SUBJECT TO REVISION

June 2016



PROVIDE YOUR
COMMENTS
TO A
COURT
REPORTER



What is Scoping?

Scoping is the First Step in the Tier 1 EIS Process

- Identifies what should be studied
- Allows for early coordination and outreach

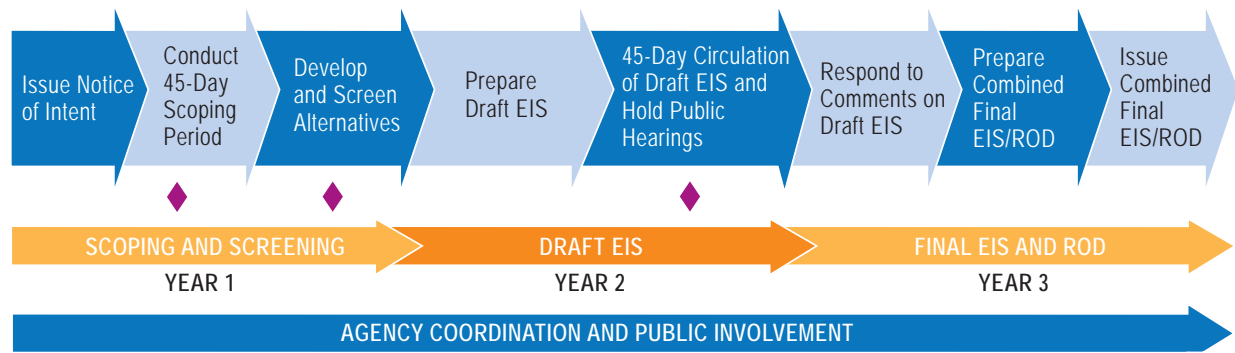
Notify Public and Agencies

- Tier 1 EIS being prepared
- Solicit input on process and corridor

Helps Guide “Scope” and Content of Tier 1 EIS

- Purpose and need
- Alternatives to be studied
- Impacts to be evaluated
- Evaluation methods to be used

Tier 1 Environmental Impact Statement Process



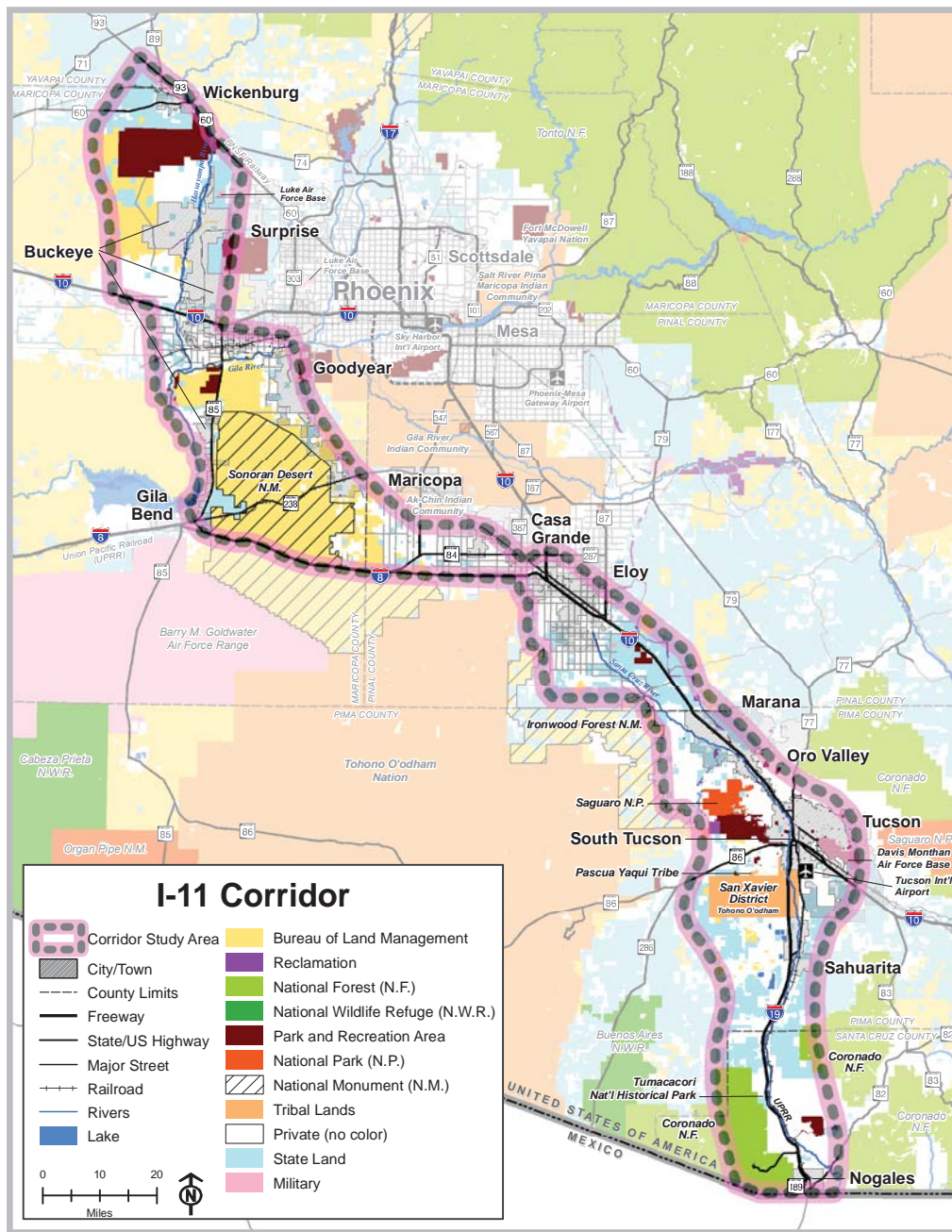
◆ Official Agency and Public Opportunity for Comment during Tier 1 EIS Process

EIS = Environmental Impact Statement
 ROD = Record of Decision



The I-11 Corridor Tier 1 EIS

The Tier 1 EIS will assess the potential social, economic, and natural environmental impacts of a vehicular transportation facility and potential multimodal facility (rail and utility) opportunities in the designated I-11 Corridor across a range of alternatives, including a “No Build” alternative.






What are the Goals for I-11?

A project's purpose and need is essential in establishing the foundation for developing the reasonable range of alternatives.

The Goals of I-11 are to:

- Provide an access-controlled, north-south transportation corridor
- Connect key metropolitan areas and markets in Arizona with Mexico and Canada
- Support improvement of regional mobility for people, goods, and homeland security
- Provide enhanced transportation opportunities for trade and economic vitality

What needs should I-11 solve?



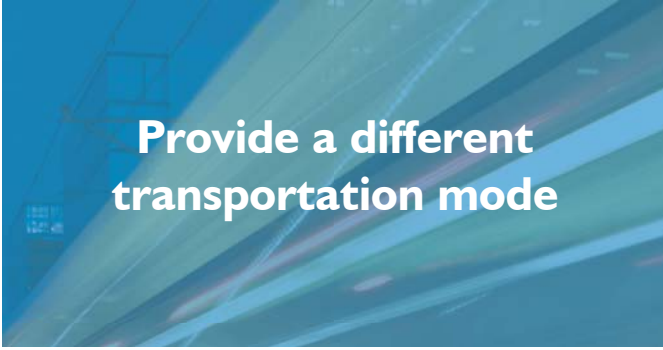
Relieve local congestion to improve safety, travel times, and reliability




Improve regional travel between Southern and Northwestern Arizona



Improve freight travel, reducing bottlenecks on existing highways



Provide a different transportation mode



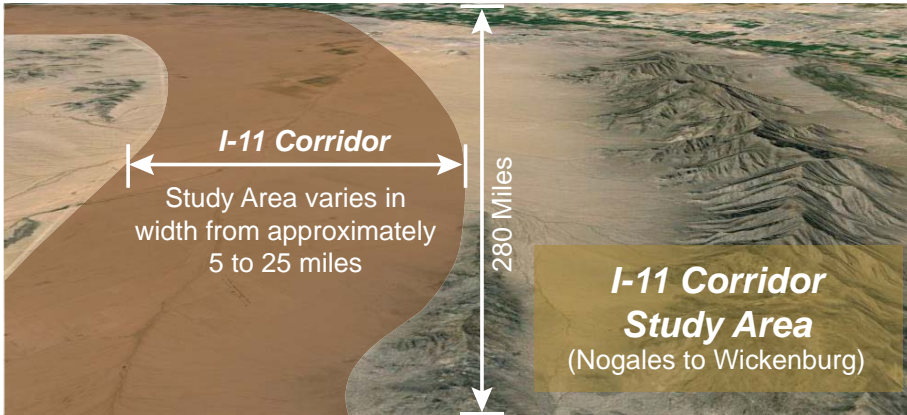
Support homeland security and national defense needs



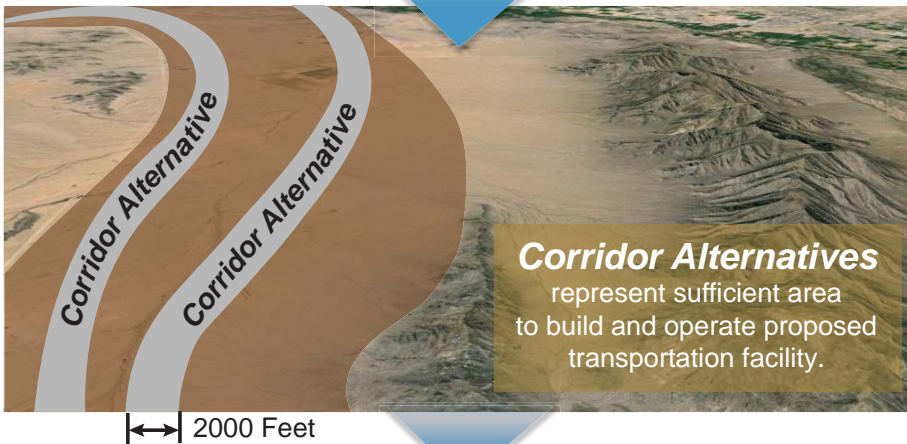
What else?



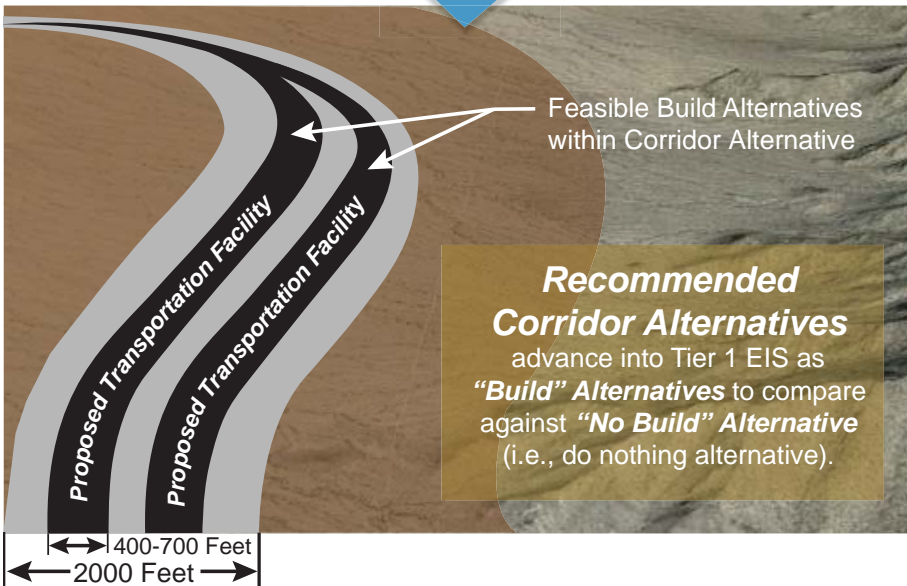
Getting to Recommended Corridor Alternatives



During Scoping:
Gather information about the I-11 Corridor study area to identify opportunities and constraints



After Scoping:
Develop and screen corridor alternatives to a reasonable range, including type of transportation facility



Screening Conclusion:
Determine recommended corridor alternatives (2,000 feet wide) to advance into Tier 1 EIS

ALL INFORMATION PRESENTED IS PRELIMINARY AND SUBJECT TO REVISION

June 2016



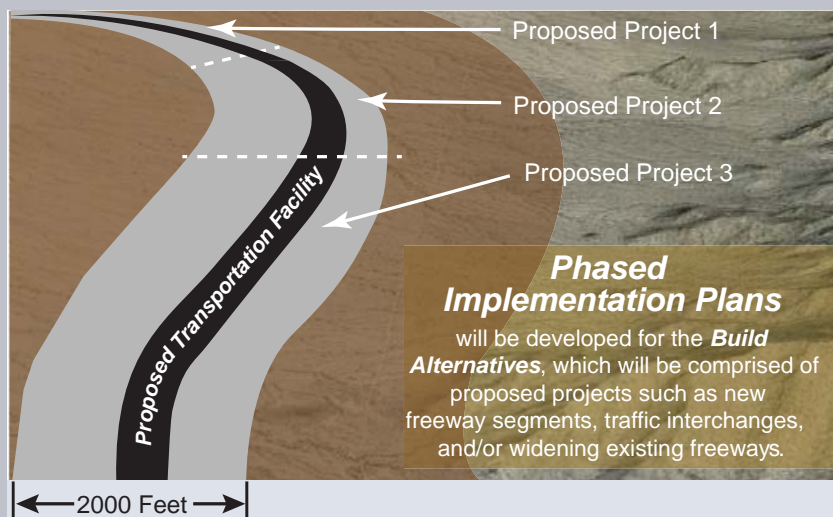
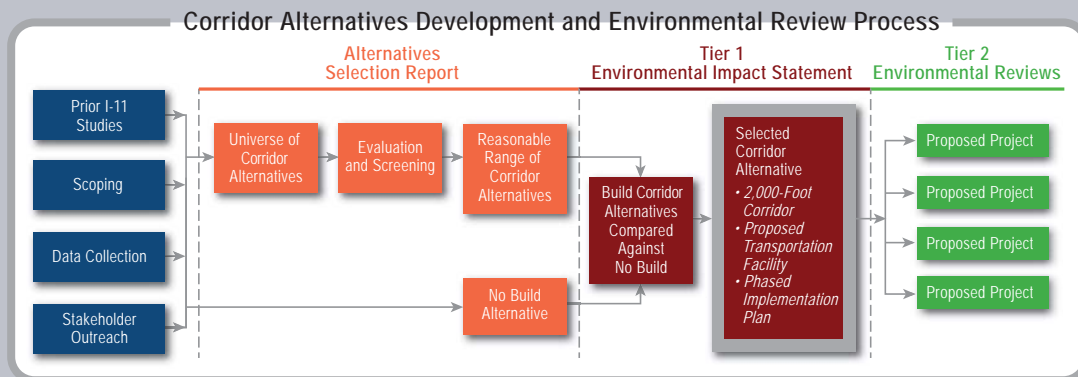
What Questions Will the Tier 1 EIS Answer?

- Potential social, economic, and natural environmental impacts
- Type of vehicular transportation facility
- Potential multimodal facility (rail and utility) opportunities
- Proposed projects for Phased Implementation Plan



Selected Corridor Alternative for the I-11 Corridor

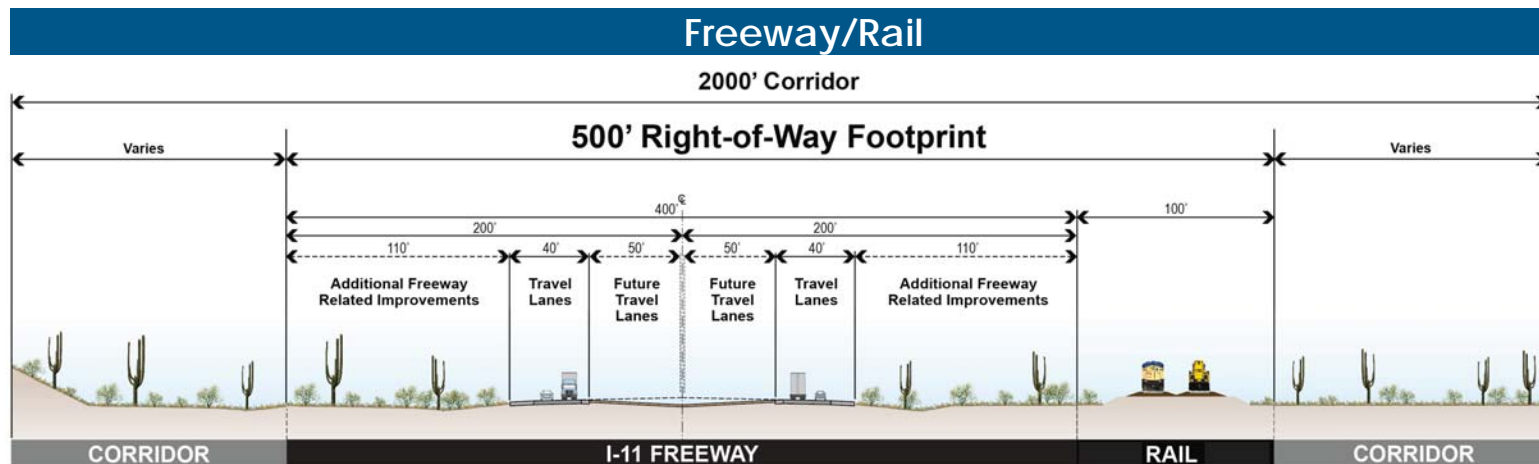
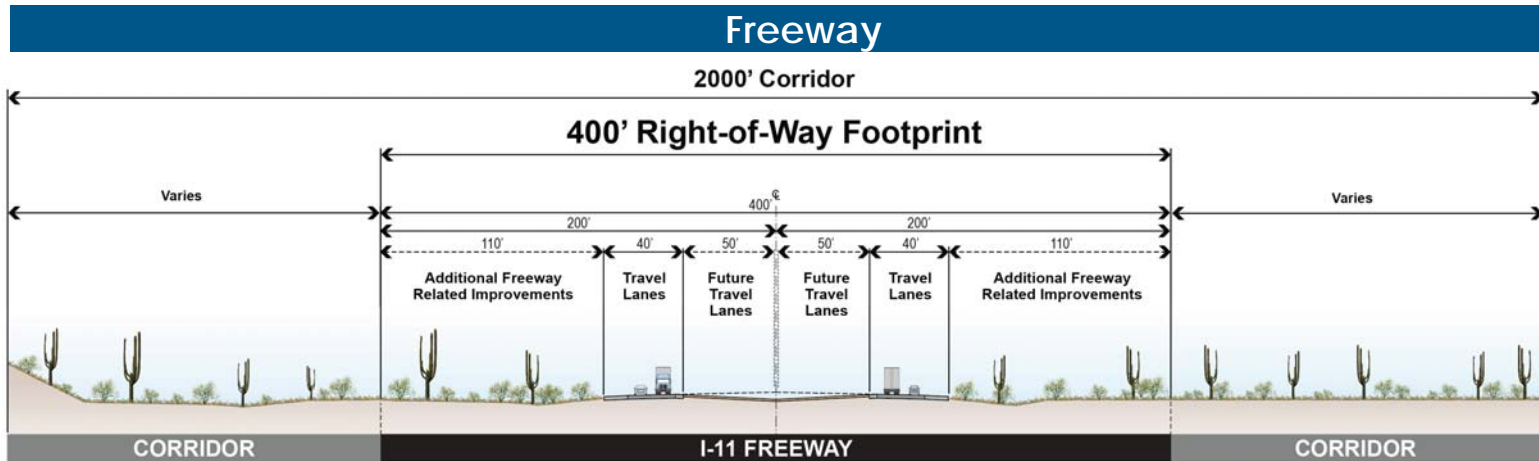
The Tier 1 EIS will Provide a Roadmap for Advancing Proposed Projects in the Future.





Proposed Transportation Facility Options

I-11 is a proposed interstate freeway, but what other transportation facilities might share space with this 2,000-foot corridor?

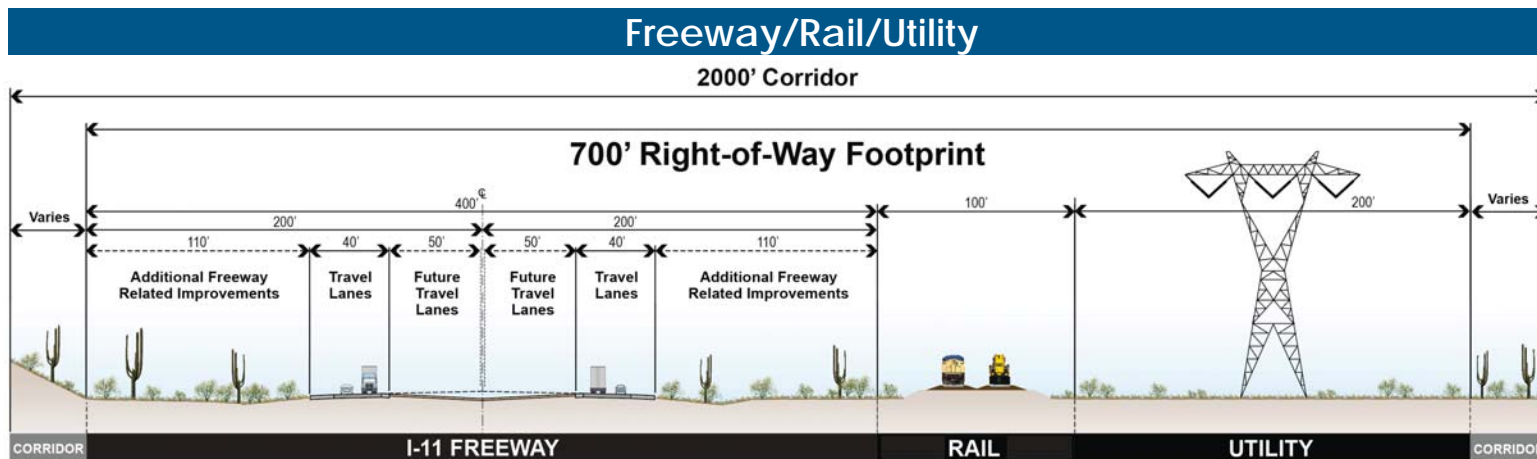
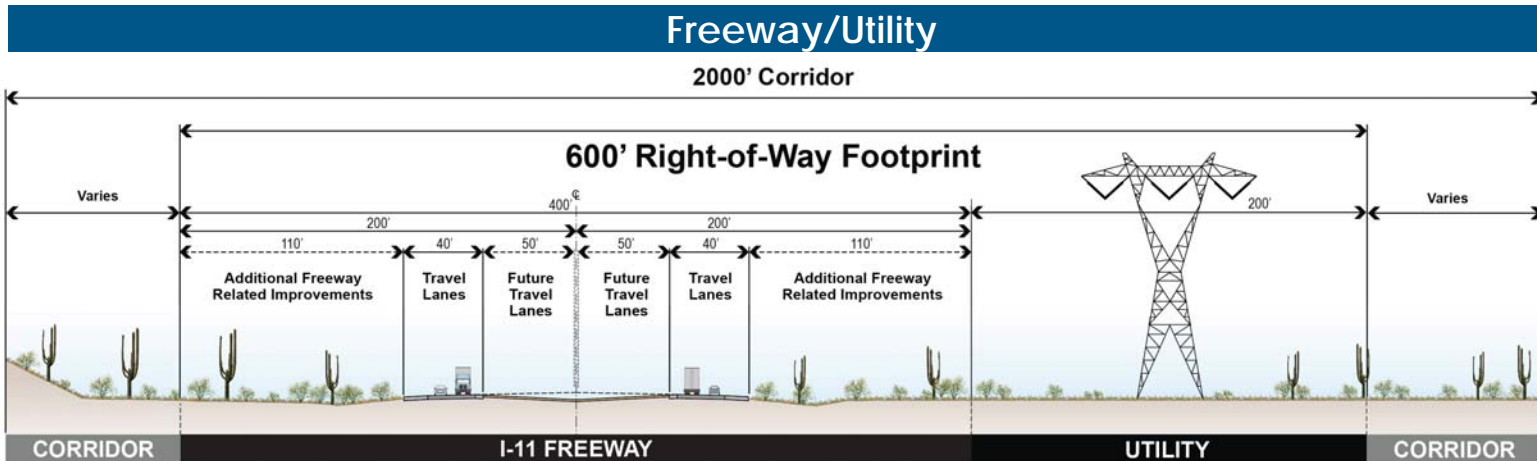


Note: Additional freeway related improvements could include frontage roads, drainage, maintenance roads, sound walls, etc.



Proposed Transportation Facility Options

I-11 is a proposed interstate freeway, but what other transportation facilities might share space with this 2,000-foot corridor?



Note: Additional freeway related improvements could include frontage roads, drainage, maintenance roads, sound walls, etc.



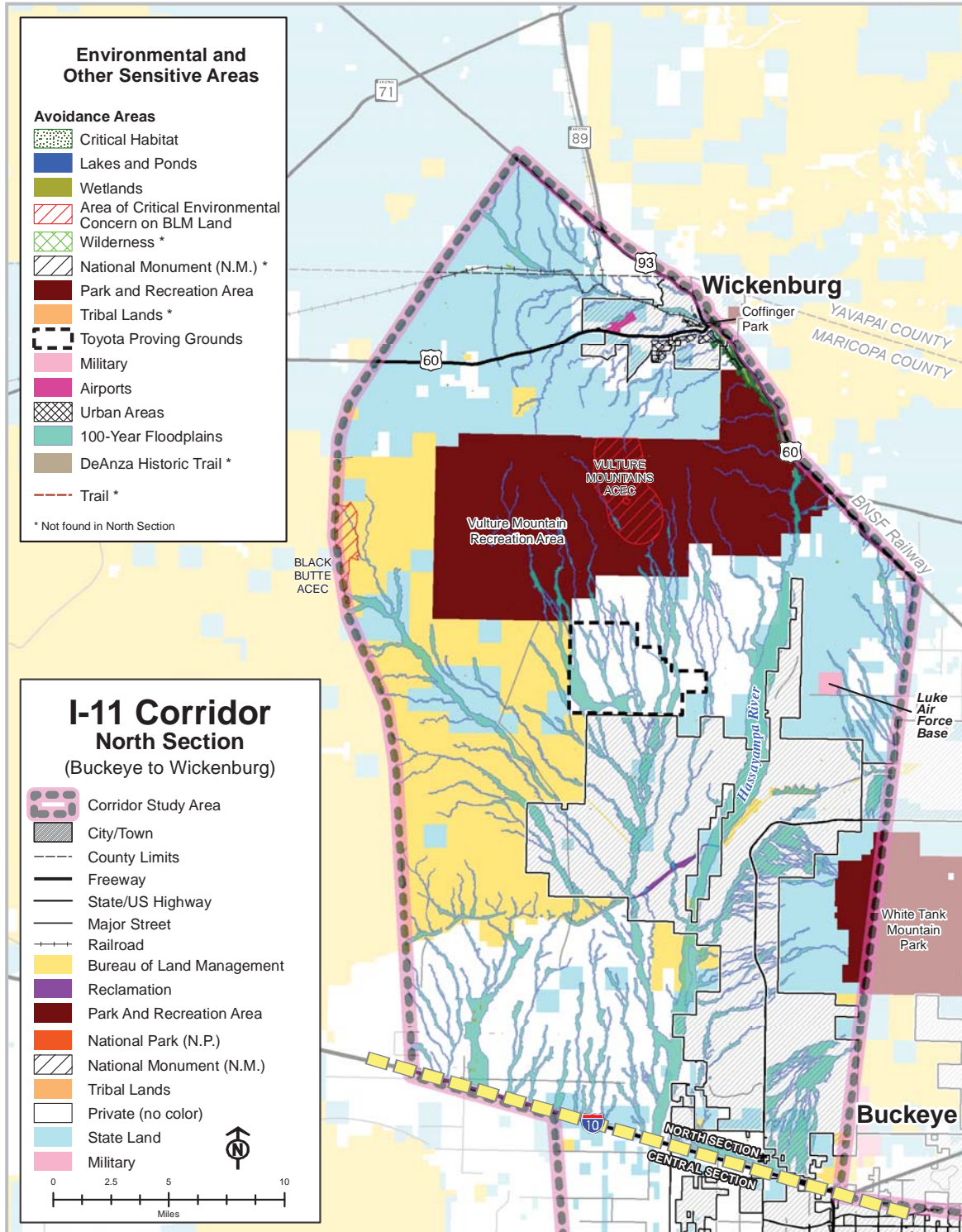
Potential Topics and Environmental Issues

The Tier 1 EIS will document technical analysis conducted on a number of potential topics and environmental issues. Help us identify areas or resources that you feel must be avoided or are important to serve.





North Section

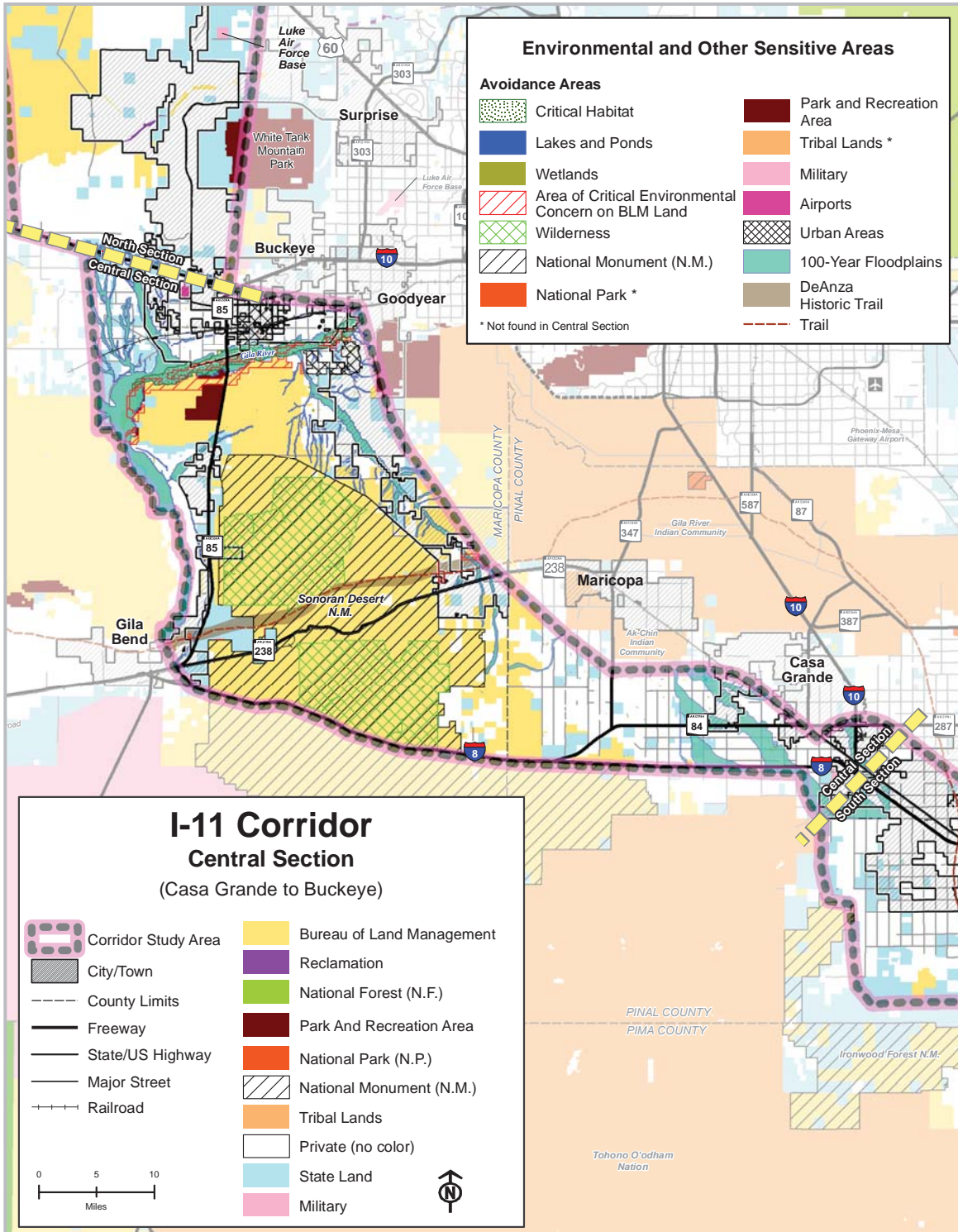


ALL INFORMATION PRESENTED IS PRELIMINARY AND SUBJECT TO REVISION

June 2016



Central Section

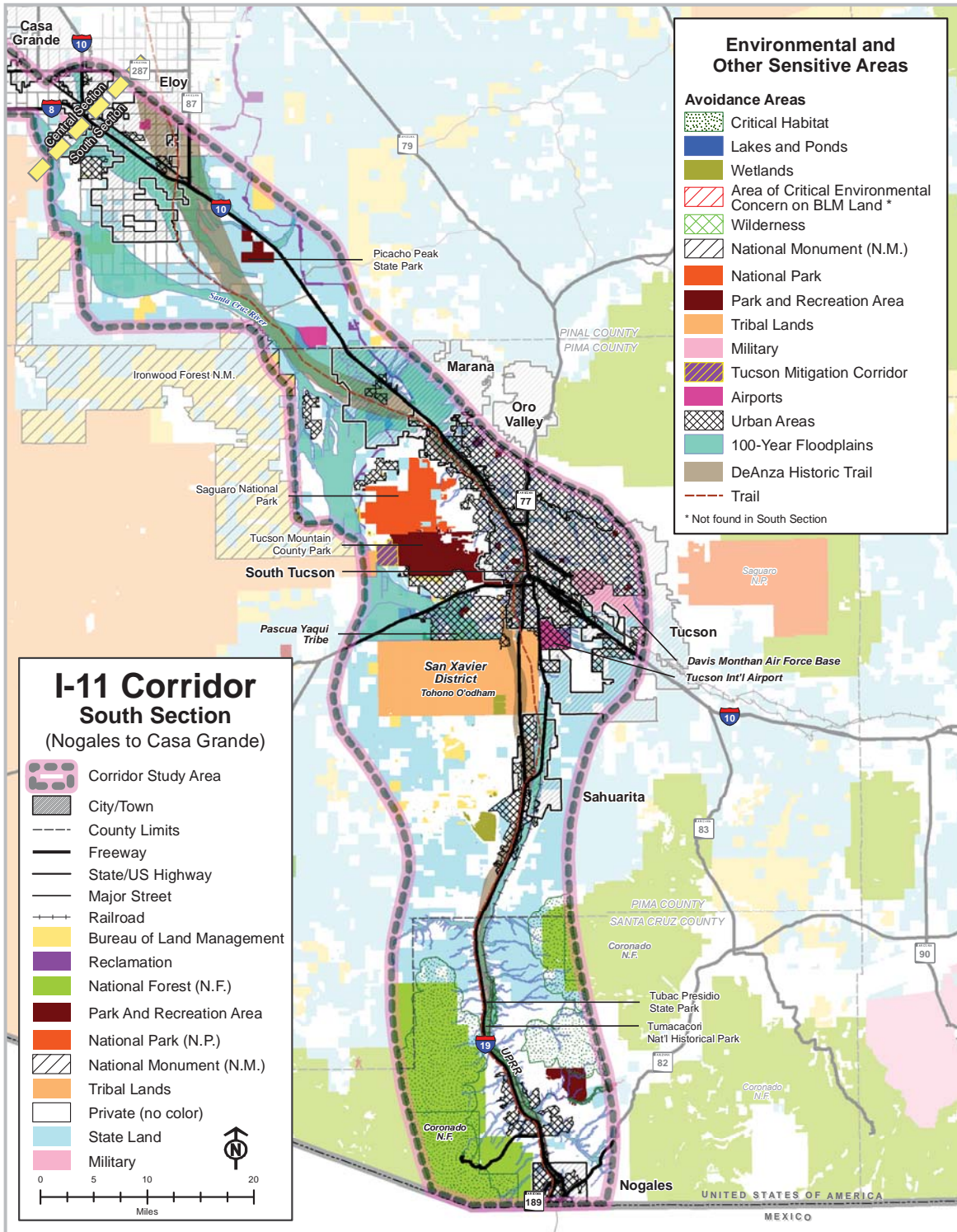


ALL INFORMATION PRESENTED IS PRELIMINARY AND SUBJECT TO REVISION

June 2016



South Section



ALL INFORMATION PRESENTED IS PRELIMINARY AND SUBJECT TO REVISION

June 2016



ADOT Interstate 11 Corridor Tier 1 Environmental Impact Statement NOGALES TO WICKENBURG

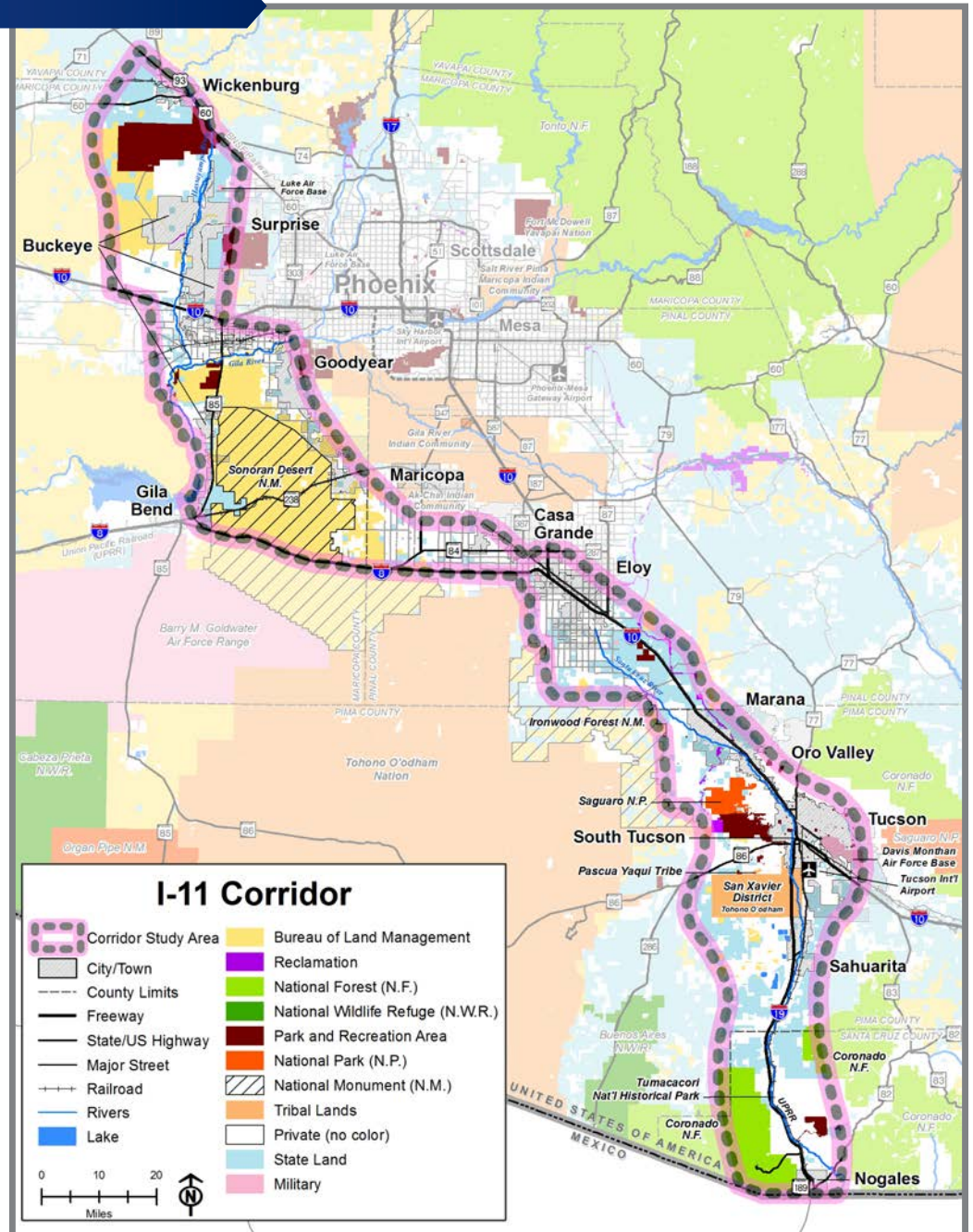
FACT SHEET | SPRING 2016

ABOUT INTERSTATE 11

In partnership with the Federal Highway Administration (FHWA) and regional planning agencies, the Arizona Department of Transportation (ADOT) has launched a three-year environmental study to select a corridor alternative for a portion of the Interstate 11 (I-11) Corridor, specifically between Nogales and Wickenburg.

STUDY GOALS

- Provide access-controlled, north-south transportation corridor
- Connect key metropolitan areas and markets in Arizona with Mexico and Canada
- Support improved regional mobility for movement of people, goods, and homeland security
- Provide enhanced transportation opportunities for economic vitality



ABOUT THE CORRIDOR STUDY AREA

The Corridor Study Area is 280 miles long and traverses four counties—Maricopa, Pinal, Pima and Santa Cruz—and is anywhere between five and

25 miles wide. The purpose of the study will be to identify a Selected Corridor Alternative within this area.



ADOT Interstate 11 Corridor Tier 1 Environment Impact Statement NOGALES TO WICKENBURG

FACT SHEET | SPRING 2016

HOW WE GOT HERE

In November 2014, ADOT, the Nevada Department of Transportation, FHWA, Federal Railroad Administration, Maricopa Association of Governments, Regional Transportation Commission of Southern Nevada, and other key stakeholders, completed an initial two-year feasibility study known as the Interstate 11 and Intermountain West Corridor Study (IWCS). Upon completion of this first step in the I-11 development process, FHWA and ADOT are continuing to advance the project in Arizona for the approximate 280-mile section between Nogales and Wickenburg. (See reverse side for a map of the Corridor Study Area.) For additional information on the IWCS, please visit: i11study.com/IWC-Study.

ABOUT THE TIER 1 EIS PROCESS

The three-year environmental study will be completed in accordance with the National Environmental Policy Act (NEPA) and other regulatory requirements, and will consider possible routes between Nogales and Wickenburg. The first step is developing an Alternatives Selection Report assessing a wide range of corridor alternatives and options, along with opportunities and constraints. A Draft Tier 1 Environmental Impact Statement (EIS) will evaluate in greater detail a smaller number of corridor alternatives, including a phased implementation plan. A no-build alternative will also be evaluated in the Draft EIS.

HOW YOU CAN GET INVOLVED

As part of the study process, ADOT and FHWA will engage and involve stakeholder agencies, organizations and members of the community throughout the study process. Opportunities to comment will be available through meetings, community events and other forums. Formal public outreach opportunities will be announced throughout the study process.

To be added to the study notification list, or to provide comments at any point during the process, please contact us:



i11study.com/Arizona



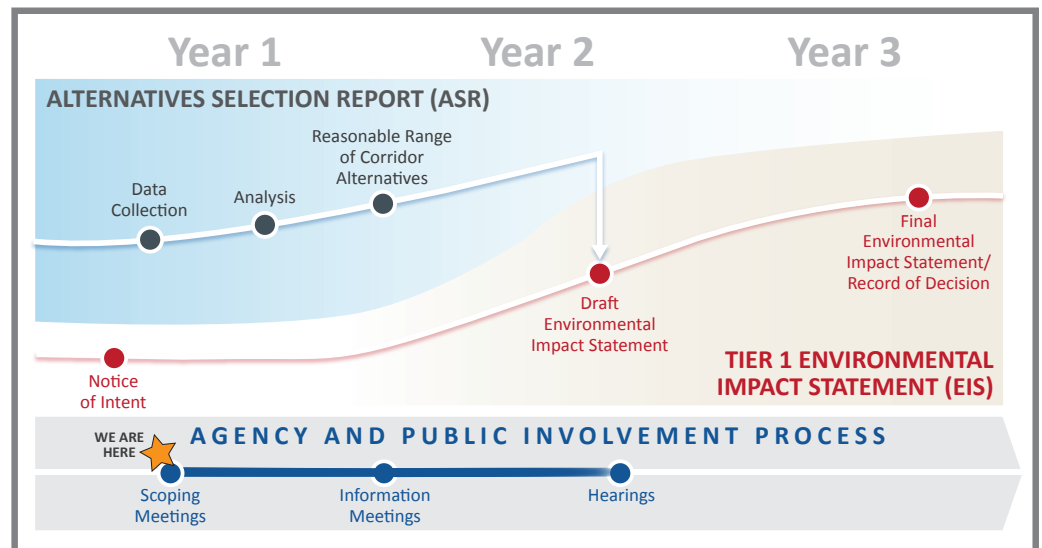
i-11ADOTStudy@hdrinc.com



1-844-544-8049 (Toll-free/bilingual)



Interstate 11 Tier 1 EIS Study Team
c/o ADOT Communications
1655 W. Jackson St. , Mail Drop 126F
Phoenix, AZ 85007



Study Process and Schedule



Declaración de Impacto Ecológico del Corredor de Nivel 1 del Interestatal 11

NOGALES A WICKENBURG

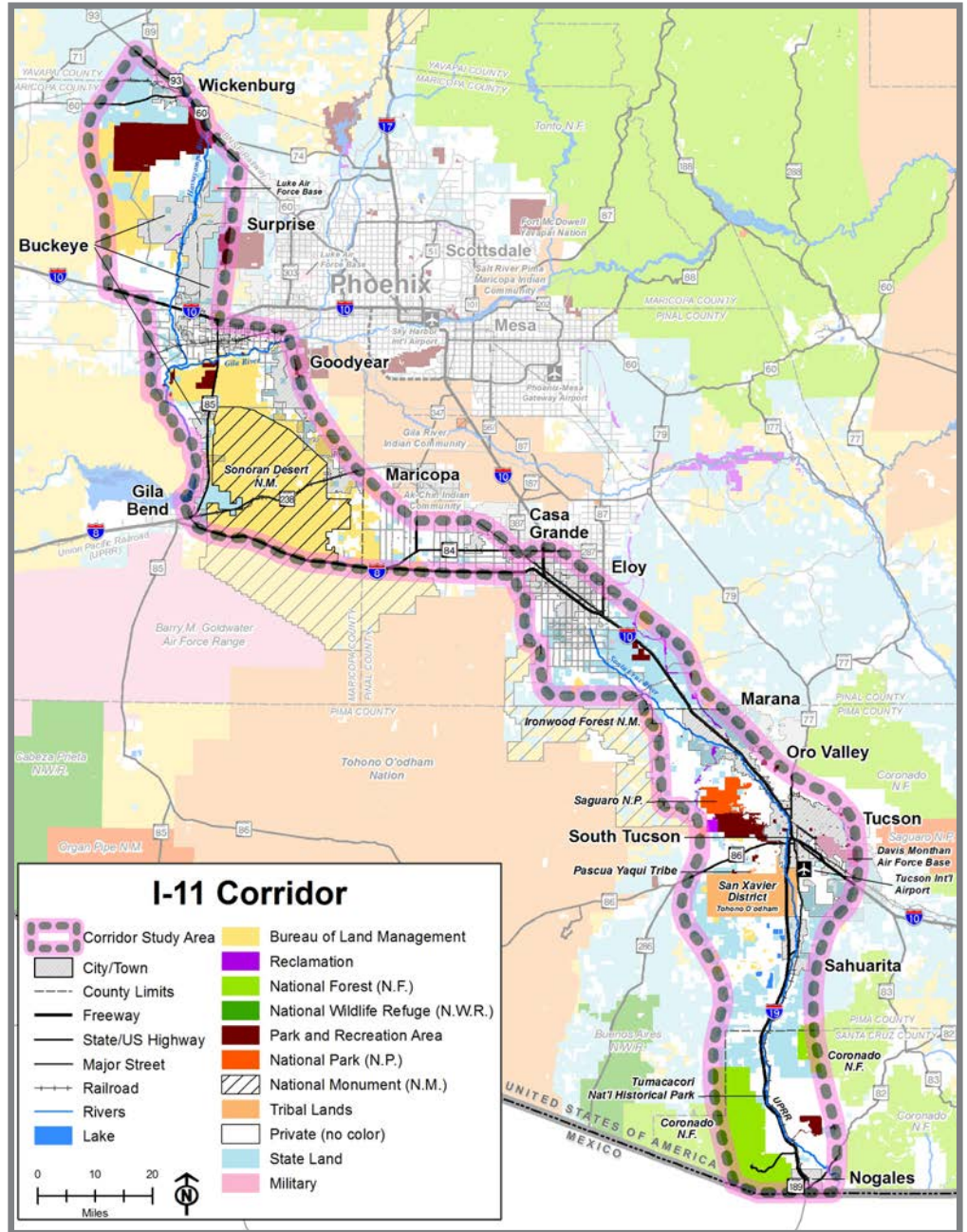
HOJA INFORMATIVA | PRIMAVERA DE 2016

ACERCA DEL INTERESTATAL 11

En colaboración con la Administración Federal de Carreteras (FHWA, por sus siglas en inglés) y agencias regionales de planificación, el Departamento de Transporte de Arizona (ADOT, por sus siglas en inglés) ha empezado un estudio ecológico de tres años para una parte del Corredor de la Interestatal 11 (I-11), específicamente entre Nogales y Wickenburg.

LAS METAS DEL ESTUDIO

- Proporcionar acceso controlado, en un corredor de transporte de norte a sur
- Conectar las principales áreas metropolitanas y los mercados de Arizona con México y Canadá
- Soporte mejorado de la movilidad regional para el movimiento de personas, mercancías, y la seguridad nacional
- Proporcionar mejores oportunidades de transporte para la vitalidad



ACERCA DE LA ZONA DE ESTUDIO DEL CORREDOR

La Zona de Estudio del Corredor cruza 280 millas y atraviesa cuatro condados—Maricopa, Pinal, Pima y Santa Cruz—y es entre 5 y 25 millas de ancho. El

propósito del estudio será el de identificar un Corredor Alternativo Seleccionado dentro de esta zona.



Declaración de Impacto Ecológico del Corredor de Nivel 1 del Interestatal 11 NOGALES A WICKENBURG

HOJA INFORMATIVA | PRIMAVERA DE 2016

COMO LLEGAMOS A ESTE PUNTO

En noviembre de 2014, ADOT, el Departamento de Transporte de Nevada, FHWA, la Administración Federal de Ferrocarriles, la Asociación de Gobiernos de Maricopa, la Comisión Regional de Transporte del Sur de Nevada, y otros depositarios importantes terminaron un estudio de viabilidad inicial de dos años conocido como el Estudio del Corredor Interestatal e Inter-Montaña Oeste (IWCS, por sus siglas en inglés). Al terminar este primer paso en el proceso de desarrollo del I-11, FHWA y ADOT continúan a adelantar el proyecto en Arizona para la sección de aproximadamente 280 millas entre Nogales y Wickenburg. (Véase al revés un mapa de la Zona de Estudio del Corredor.) Para información adicional del IWCS, por favor, visite: i11study.com/IWC-Study.

ACERCA DEL PROCESO DE EIS DE NIVEL 1

Se realizará el estudio ecológico de tres años según el Acta Nacional de Políticas Ecológicas (NEPA, por sus siglas en inglés) y otros requisitos reguladores, y se considerarán rutas posibles entre Nogales y Wickenburg. El primer paso es el de desarrollar una Declaración de Selección de Alternativas en la que se evaluará una amplia gama de alternativas y opciones para el corredor, junto con oportunidades y limitaciones. Por medio de una Declaración de Impacto Ecológico de Nivel 1 Borrador (EIS, por sus siglas en inglés) se evaluará con máximo detalle un número menor de alternativas para el corredor, incluyendo un plan de implementación por fases. También se evaluará una alternativa no-construir en el EIS Borrador.

COMO USTED PUEDE PARTICIPAR

Como parte del proceso de estudio, ADOT y FHWA envolverá e involucrará a agencias participantes, organizaciones y miembros de la comunidad a lo largo del proceso del estudio. Oportunidades para dar sus comentarios se harán disponibles por medio de reuniones, eventos comunitarios y otros foros. Se anunciarán oportunidades formales para realizar alcance público a lo largo del proceso del estudio.

Para añadirse a la lista de notificaciones del estudio, o para dar comentarios en cualquier momento en el proceso, favor de ponerse en contacto con nosotros:



i11study.com/Arizona



i-11ADOTStudy@hdrinc.com



1-844-544-8049 (sin cargo/bilingüe)



Equipo del Estudio del EIS de Nivel 1 del Interestatal 11
c/o ADOT Communications
1655 W. Jackson St. , Mail Drop 126F
Phoenix, AZ 85007



Proceso y Calendario del Estudio



c/o ADOT Communications
1655 W. Jackson Street, Mail Drop 126F
Phoenix, AZ 85007



Interstate 11 Tier 1 EIS Study Team
c/o ADOT Communications
1655 W. Jackson Street, Mail Drop 126F
Phoenix, AZ 85007

Help Shape the Future of Arizona's Transportation System, TODAY!

FOLD HERE

To be added to the study notification list, or to provide comments at any point during the process, please contact us:



i11study.com/Arizona



i-11ADOTStudy@hdrinc.com



1-844-544-8049 (Toll-free/bilingual)



Interstate 11 Tier 1 EIS Study Team
c/o ADOT Communications
1655 W. Jackson Street, Mail Drop 126F | Phoenix, AZ 85007

FOLD HERE

Next Steps

During the next several months, the Study team will analyze your comments and incorporate your ideas and preferences when identifying solutions (known as corridor alternatives) to address the needs of the I-11 Corridor.

Once the draft corridor alternatives have been identified, the public will be asked to provide feedback on the proposed solutions. This next round of public participation is anticipated in early 2017.

Name: _____

Address: _____

Zip Code: (required) _____

Email: _____



ADOT Interstate 11 Corridor Tier 1 Environment Impact Statement NOGALES TO WICKENBURG

JUNE 2016

PUBLIC SCOPING SURVEY

Help Shape the Future of Arizona's Transportation System, TODAY!

Thank you for participating in the Interstate 11 (I-11) Tier 1 Environmental Impact Statement Public Scoping process by completing this survey. Public Scoping is a time for our team to learn from the community prior to embarking on the environmental study. We need your input on what transportation problems you experience today, how to solve these problems in the future, and what you feel is important within the I-11 Corridor Study Area.

For Questions 1–4, please rate each of the items on a scale of 1–5.
1= highest ranking [most important] 5=lowest ranking [least important]

1

Please tell us what problems you experience today, or anticipate in the future, related to transportation in the Corridor Study Area that the I-11 project could address. Please rate the following in order of importance to you.

- Relieve local congestion, improve travel time and reliability (reduce how long a trip will take or ensure certainty of travel time)
- Relieve regional congestion, improve travel time and reliability (between Southern and Northwestern Arizona)
- Improve freight travel and reliability, reducing bottlenecks on existing highways
- Improve local access to communities and resources (parks, recreation, and tourism)
- Support a different transportation mode than what exists today
- Support homeland security and national defense needs
- Other desirable outcomes?

2

What should I-11 be or accommodate within the Corridor? Please rate the following in order of importance to you.

- New highway/freeway
- Combination of new and existing highway/freeway
- Enhance or expand existing highway/freeway
- Accommodate rail within corridor alternatives
- Accommodate utilities within corridor alternatives (for example: electric, fiber optic, communications)
- Accommodate rail and utilities within corridor alternatives

Project No. M5180 01P / Federal Aid No. 999-M(161)S



FOR MORE INFORMATION:
1-844-544-8049
i-11ADOTStudy@hdrinc.com
i11study.com/Arizona



ADOT Interstate 11 Corridor Tier 1 Environment Impact Statement (NOGALES TO WICKENBURG)

For Questions 1–4, please rate each of the items on a scale of 1–5. 1= highest ranking [most important] 5=lowest ranking [least important]

3 The study will evaluate and consider the potential impacts on many human environmental factors. Please rate the following in order of importance to you.

- Neighborhoods, diverse communities, and residences
- Economic development and growth
- Land use
- Public parks and recreation
-
-

4 The study also will evaluate and consider the potential impacts on many natural environmental factors. Please rate the following in order of importance to you.

- Air quality
- Biological resources (for example: plants, wildlife, and habitats)
- Geology/fissures, soils, and farmland
- Hazardous materials
- Historic structures and archaeological sites
- Noise and vibration
- Visual and aesthetics
- Water resources (for example: rivers, washes, floodplains, and drainage)
-
-

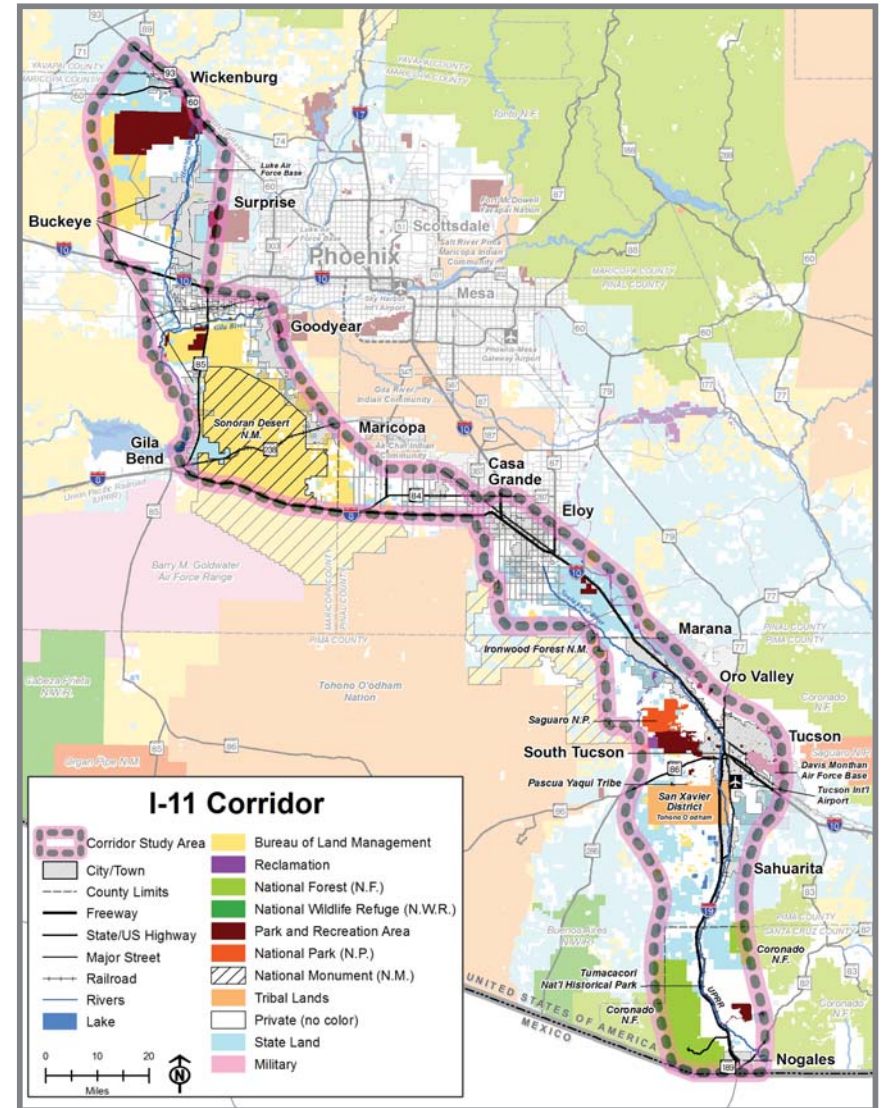
5 Identify the areas or resources within the Corridor Study Area that you feel must be avoided or are important to consider.

6 How do you prefer to receive information:

- | | |
|-------------------------------------|---|
| <input type="checkbox"/> Email | <input type="checkbox"/> Facebook |
| <input type="checkbox"/> Website | <input type="checkbox"/> Text Messaging |
| <input type="checkbox"/> Radio | <input type="checkbox"/> Direct Mail |
| <input type="checkbox"/> Television | <input type="checkbox"/> Blogs |
| <input type="checkbox"/> Newspaper | <input type="checkbox"/> Other _____ |
| <input type="checkbox"/> Twitter | |

7 Additional comments:

Please use this map to provide any comments on specific areas, ideas and concerns.



Thank you for your continued interest in the I-11 Study.



c/o ADOT Communications
1655 W. Jackson Street, Mail Drop 126F
Phoenix, AZ 85007



Interstate 11 Tier 1 EIS Study Team
c/o ADOT Communications
1655 W. Jackson Street, Mail Drop 126F
Phoenix, AZ 85007

Ayude a Conformar el Futuro del Sistema de Transporte de Arizona, HOY!

DOBLAR AQUÍ

Para añadirse a la lista de notificaciones del estudio, o para dar comentarios en cualquier momento en el proceso, favor de ponerse en contacto con nosotros:



i11study.com/Arizona



i-11ADOTStudy@hdrinc.com



1-844-544-8049 (sin cargo/bilingüe)



Equipo del Estudio del EIS de Nivel 1 del Interestatal 11
c/o ADOT Communications
1655 W. Jackson Street, Mail Drop 126F | Phoenix, AZ 85007

DOBLAR AQUÍ

Pasos siguientes

Gracias por proveernos sus opiniones, sus comentarios son muy importantes para nuestro equipo. Durante los próximos meses, el equipo de estudio analizará sus comentarios e incorporará sus ideas y preferencias en la identificación de soluciones (conocida como alternativas del corredor) de abordar las necesidades del corredor I-11.

Una vez identificadas, las alternativas preliminares del corredor, se le pedirá al público proporcionar información sobre las propuestas soluciones. Esta próxima ronda de la participación del público se prevé a principios del año 2017.

Nombre: _____

Dirección: _____

Código postal: (requerido) _____

Correo electrónico: _____



Declaración de Impacto Ecológico del Corredor de Nivel 1 del Interestatal 11 NOGALES A WICKENBURG

JUNIO DE 2016

ENCUESTA DE ALCANCE PÚBLICO

Ayude a Conformar el Futuro del Sistema de Transporte de Arizona, HOY!

Gracias por su participación en el 1er Nivel de la Declaración del Proceso de Alcance Público Impacto Ecológico por completar esta encuesta para la Interestatal 11 (I-11). El alcance público es un periodo para que nuestro equipo aprenda de la comunidad antes de embarcarse en el estudio ecológico. Necesitamos su opinión sobre los problemas de transporte que experimenta hoy en día, la forma de resolver estos problemas en el futuro, y lo que considera importante sobre el Área de Estudio del Corredor I-11.

Para las preguntas 1-4, por favor clasifique las respuestas en orden de importancia para usted. 1 = más alto rango [más importante] 5 = clasificación más baja [menos importante]

1

Por favor, díganos qué problemas experimenta hoy en día, o anticipa en el futuro, relacionado con la transportación en el Área de Estudio del Corredor que el proyecto I-11 podría abordar. Por favor, clasifique el siguiente en orden.

- Aliviar la congestión local, mejorar el tiempo de viaje y la fiabilidad (reducir el tiempo que un viaje durará o garantizar la certeza del tiempo de viaje)
- Aliviar la congestión regional, mejorar el tiempo de viaje y la fiabilidad (entre el sur y el noroeste de Arizona)
- Mejorar los viajes de carga y fiabilidad, reducir los embotellamientos existentes en las carreteras
- Mejorar el acceso local a las comunidades y a los recursos (parques, recreación, y turismo)
- Apoyar un medio de transporte diferente a lo que existe actualmente
- Apoyar a la seguridad nacional y las necesidades de la defensa nacional
- ¿Otros resultados deseables?

2

¿Qué debería ser I-11 o acomodarse dentro del Corredor? Por favor, clasifique el siguiente en orden.

- Nueva carretera/autopista
- La combinación de una nueva y existente carretera/autopista
- Mejorar o ampliar la carretera/autopista existente
- Acomodar corredor de ferrocarril dentro de las alternativas
- Acomodar utilidades dentro de las alternativas del corredor (por ejemplo: electricidad, fibra óptica, comunicaciones)
- Acomodar ferrocarril y las utilidades dentro de las alternativas del corredor

Núm. de Proyecto M5180 01P / Núm. de Asistencia Federal 999-M(161)S



PARA MÁS INFORMACIÓN:

1-844-544-8049

i-11ADOTStudy@hdrinc.com

i11study.com/Arizona



Declaración de Impacto Ecológico del Corredor de Nivel 1 del Interestatal 11 (NOGALES A WICKENBURG)

ENCUESTA DE ALCANCE PÚBLICO | JUNIO DE 2016

Para las preguntas 1-4, por favor clasifique las respuestas en orden de importancia para usted. 1 = más alto rango [más importante] 5 = clasificación más baja [menos importante]

3 El estudio evaluará y considerará el impacto potencial de múltiples factores ambientales humanos. *Por favor, clasifique el siguiente en orden.*

- Vecindarios, comunidades diversas, y residencias
- El desarrollo económico y el crecimiento
- Uso de la tierra
- Parques públicos y actividades recreativas
-
-

4 El estudio también evaluará y considerará el impacto potencial de múltiples factores ambientales naturales. *Por favor, clasifique el siguiente en orden.*

- Calidad del aire
- Recursos biológicos (por ejemplo: plantas, la fauna, y los hábitats)
- Geología/fisuras, los suelos, y zonas de cultivo
- Materiales peligrosos
- Estructuras históricas y sitios arqueológicos
- Ruidos y vibraciones
- Visuales y la estética
- Recursos hídricos (por ejemplo: ríos, lavados, llanuras aluviales, y desagües)
-
-

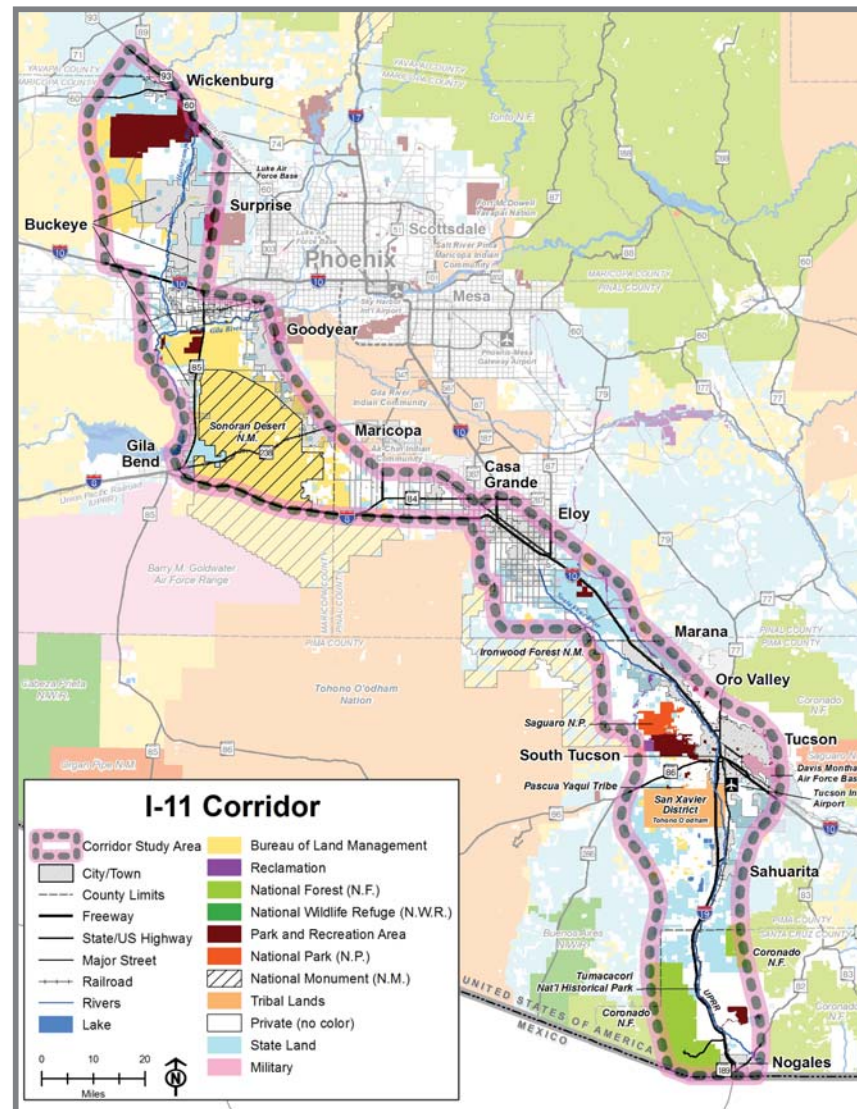
5 Identifique las áreas o recursos dentro del Área de Estudio del Corredor que usted siente deben ser evitadas o es importante a considerar.

6 ¿Cómo prefiere recibir información:

- | | |
|---|---|
| <input type="checkbox"/> Correo electrónico | <input type="checkbox"/> Facebook |
| <input type="checkbox"/> Página de Internet | <input type="checkbox"/> Mensaje de texto |
| <input type="checkbox"/> Radio | <input type="checkbox"/> Correo directo |
| <input type="checkbox"/> Televisión | <input type="checkbox"/> Blogs |
| <input type="checkbox"/> Periódico | <input type="checkbox"/> Otro _____ |
| <input type="checkbox"/> Twitter | |

7 Comentarios adicionales:

Por favor, utilice este mapa podían aportar cualquier comentario sobre áreas específicas, ideas y preocupaciones.



Gracias por su continuo interés en el estudio I-11.



ADOT Interstate 11 Public Scoping Survey June 2016

Help Shape the Future of Arizona's Transportation System, TODAY!

Thank you for participating in the Interstate 11 (I-11) Tier 1 Environmental Impact Statement Public Scoping process by completing this survey. Public Scoping is a time for our team to learn from the community prior to embarking on the environmental study. We need your input on what transportation problems you experience today, how to solve these problems in the future, and what you feel is important within the I-11 Corridor Study Area. You may view the Corridor Study Area Map at www.i11study.com/Arizona

1. Please provide your name (optional)

2. E-mail address (optional)

3. What is your address? (optional)

4. Home ZIP Code (required)

5. Please tell us what problems you experience today, or anticipate in the future, related to transportation in the Corridor Study Area that the I-11 project could address. Please rank the following in order of importance to you. (1= highest ranking [most important], 5=lowest ranking [least important]). You may view the Corridor Study Area Map at www.i11study.com/Arizona

	1 (most important)	2	3	4	5 (least important)
Relieve local congestion, improve travel time and reliability (reduce how long a trip will take or ensure certainty of travel time)	<input type="radio"/>	<input type="radio"/>	<input type="radio"/>	<input type="radio"/>	<input type="radio"/>
Relieve regional congestion, improve travel time and reliability (between Southern and Northwestern Arizona)	<input type="radio"/>	<input type="radio"/>	<input type="radio"/>	<input type="radio"/>	<input type="radio"/>
Improve freight travel and reliability, reducing bottlenecks on existing highways	<input type="radio"/>	<input type="radio"/>	<input type="radio"/>	<input type="radio"/>	<input type="radio"/>
Improve local access to communities and resources (parks, recreation, and tourism)	<input type="radio"/>	<input type="radio"/>	<input type="radio"/>	<input type="radio"/>	<input type="radio"/>
Need for a different transportation mode than what exists today	<input type="radio"/>	<input type="radio"/>	<input type="radio"/>	<input type="radio"/>	<input type="radio"/>
Support homeland	<input type="radio"/>	<input type="radio"/>	<input type="radio"/>	<input type="radio"/>	<input type="radio"/>

security and national defense needs

Other desirable outcomes

6. What should I-11 be or accommodate within the Corridor. Please rank the following in order of importance to you. (1= highest ranking [most important], 5=lowest ranking [least important]). You may view the Corridor Study Area Map at www.i11study.com/Arizona

	1 (most important)	2	3	4	5 (least important)
New highway/freeway	<input type="radio"/>	<input type="radio"/>	<input type="radio"/>	<input type="radio"/>	<input type="radio"/>
Combination of new and existing highway/freeway	<input type="radio"/>	<input type="radio"/>	<input type="radio"/>	<input type="radio"/>	<input type="radio"/>
Enhance or expand existing highway/freeway	<input type="radio"/>	<input type="radio"/>	<input type="radio"/>	<input type="radio"/>	<input type="radio"/>
Accommodate rail within corridor alternatives	<input type="radio"/>	<input type="radio"/>	<input type="radio"/>	<input type="radio"/>	<input type="radio"/>
Accommodate utilities within corridor alternatives (for example: electric, fiber optic, communications)	<input type="radio"/>	<input type="radio"/>	<input type="radio"/>	<input type="radio"/>	<input type="radio"/>
Accommodate rail and utilities within corridor alternatives	<input type="radio"/>	<input type="radio"/>	<input type="radio"/>	<input type="radio"/>	<input type="radio"/>

Other (please specify)

7. The study will evaluate and consider the potential impacts on many human environmental factors. Please rank the following. (1= highest ranking [most important], 5=lowest ranking [least important]):

	1 (most important)	2	3	4	5 (least important)
Neighborhoods, diverse communities, and residences	<input type="radio"/>	<input type="radio"/>	<input type="radio"/>	<input type="radio"/>	<input type="radio"/>
Economic development and growth	<input type="radio"/>	<input type="radio"/>	<input type="radio"/>	<input type="radio"/>	<input type="radio"/>
Land use	<input type="radio"/>	<input type="radio"/>	<input type="radio"/>	<input type="radio"/>	<input type="radio"/>
Public parks and recreation	<input type="radio"/>	<input type="radio"/>	<input type="radio"/>	<input type="radio"/>	<input type="radio"/>

Other (please specify)

8. The study also will evaluate and consider the potential impacts on many natural environmental factors. Please rank the following. (1= highest ranking [most important], 5=lowest ranking [least important]):

	1 (most important)	2	3	4	5 (least important)
Air quality	<input type="radio"/>	<input type="radio"/>	<input type="radio"/>	<input type="radio"/>	<input type="radio"/>
Biological resources (for example: plants, wildlife and habitats)	<input type="radio"/>	<input type="radio"/>	<input type="radio"/>	<input type="radio"/>	<input type="radio"/>
Geology/fissures, soils, and farmland	<input type="radio"/>	<input type="radio"/>	<input type="radio"/>	<input type="radio"/>	<input type="radio"/>
Hazardous materials	<input type="radio"/>	<input type="radio"/>	<input type="radio"/>	<input type="radio"/>	<input type="radio"/>
Historic structures	-	-	-	-	-

and archaeological sites

Noise and vibration

Visual and aesthetics

Water resources
(for example:
rivers, washes,
floodplains and
drainage)

Other (please specify)

9. Identify the areas or resources within the Corridor Study Area that you feel must be avoided or are important to consider. You may view the Corridor Study Area Map at www.i11study.com/Arizona

10. How do you prefer to receive information?

- Email
- Website
- Radio
- Television
- Newspaper
- Twitter
- Facebook
- Text Messaging
- Direct Mail

Blogs

Other (please specify)

11. Additional Comments:

Thank you for sharing your thoughts and providing our team valuable feedback. During the next several months, the Study team will analyze your comments and incorporate your ideas and preferences when identifying solutions (known as corridor alternatives) to address the needs of the I-11 Corridor. Once the draft corridor alternatives have been identified, the public will be asked to provide feedback on the proposed solutions. This next round of public participation is anticipated in early 2017. Thank you for your continued interest in the I-11 Study.

Done

Powered by



See how easy it is to [create a survey](#).