



## **APPENDIX C**

### **Agency Scoping Meeting Materials**

Agency Scoping Meeting Agendas  
Agency Scoping Meeting Presentation  
Agency Scoping Meeting Boards  
Agency Scoping Meeting Handout

## AGENCY SCOPING MEETING #1 IN PHOENIX

JUNE 7, 2016

1:30 TO 3:30 PM

LEADERSHIP AND EMPLOYEE ENGAGEMENT CONFERENCE ROOM  
2739 E. WASHINGTON STREET  
PHOENIX, AZ

AND/OR

CLICK HERE: [HTTPS://WWW.CONNECTMEETING.ATT.COM](https://www.connectmeeting.att.com)

MEETING NUMBER/CALL-IN: 1-888-369-1427; ACCESS CODE: 6874525#

### \* \* \* AGENDA \* \* \*

1. Introductions and Purpose of Meeting
2. Presentation on I-11 Corridor Environmental Review Process
  - a. History of Corridor
  - b. Study Goal and Objective
  - c. Overview of Process
3. Purpose of Scoping
  - a. Purpose and Need
  - b. Alternatives to be Studied
  - c. Impacts to be Evaluated
  - d. Evaluation Methods to be Used
4. Comments and Questions
5. Next Steps

*Please submit all official comments in writing to:*  
Mr. Aryan Lirange, Senior Urban Engineer  
Federal Highway Administration  
4000 North Central Avenue, Suite 1500  
Phoenix, AZ 85012  
or via e-mail at [Aryan.Lirange@dot.gov](mailto:Aryan.Lirange@dot.gov)

## AGENCY SCOPING MEETING #2 IN CASA GRANDE

**JUNE 8, 2016**  
**1:30 TO 3:00 PM**  
**DOROTHY POWELL SENIOR ADULT CENTER – DINING ROOM**  
**405 E. 6<sup>TH</sup> STREET**  
**CASA GRANDE, AZ**

AND/OR

**CLICK HERE: [HTTPS://WWW.CONNECTMEETING.ATT.COM](https://www.connectmeeting.att.com)**  
**MEETING NUMBER/CALL-IN: 1-888-369-1427; ACCESS CODE: 6874525#**

**\* \* \* AGENDA \* \* \***

1. Introductions and Purpose of Meeting
2. Presentation on I-11 Corridor Environmental Review Process
  - a. History of Corridor
  - b. Study Goal and Objective
  - c. Overview of Process
3. Purpose of Scoping
  - a. Purpose and Need
  - b. Alternatives to be Studied
  - c. Impacts to be Evaluated
  - d. Evaluation Methods to be Used
4. Comments and Questions
5. Next Steps

*Please submit all official comments in writing to:*  
 Mr. Aryan Lirange, Senior Urban Engineer  
 Federal Highway Administration  
 4000 North Central Avenue, Suite 1500  
 Phoenix, AZ 85012  
 or via e-mail at [Aryan.Lirange@dot.gov](mailto:Aryan.Lirange@dot.gov)

## AGENCY SCOPING MEETING #3 IN TUCSON

JUNE 22, 2016

10:00 TO 11:30 AM

PIMA ASSOCIATION OF GOVERNMENTS, LARGE CONFERENCE ROOM

1 E. BROADWAY BOULEVARD, SUITE 401

TUCSON, AZ

AND/OR

CLICK HERE: [HTTPS://WWW.CONNECTMEETING.ATT.COM](https://www.connectmeeting.att.com)

MEETING NUMBER/CALL-IN: 1-888-369-1427; ACCESS CODE: 6874525#

### \* \* \* AGENDA \* \* \*

1. Introductions and Purpose of Meeting
2. Presentation on I-11 Corridor Environmental Review Process
  - a. History of Corridor
  - b. Study Goal and Objective
  - c. Overview of Process
3. Purpose of Scoping
  - a. Purpose and Need
  - b. Alternatives to be Studied
  - c. Impacts to be Evaluated
  - d. Evaluation Methods to be Used
4. Comments and Questions
5. Next Steps

*Please submit all official comments in writing to:*  
 Mr. Aryan Lirange, Senior Urban Engineer  
 Federal Highway Administration  
 4000 North Central Avenue, Suite 1500  
 Phoenix, AZ 85012  
 or via e-mail at [Aryan.Lirange@dot.gov](mailto:Aryan.Lirange@dot.gov)



# I-11 Corridor

Tier 1 Environmental Impact Statement

Scoping Meeting



June 2016

## Purpose of Scoping Meeting

- Federal environmental review process
- Share information about process
- Seek input on “scope” and content
- Describe opportunities for involvement



## History of I-11 Corridor



- Intermodal Surface Transportation Efficiency Act 1991
- North American Free Trade Agreement 1993
- CANAMEX Trade Corridor 1995
- National Highway System High Priority Corridor 2012
- I-11 and Intermountain West Corridor Study 2014
- Fixing America's Surface Transportation Act 2015
- **Federal Environmental Review Process 2016**

Federal Lead Agency:  
Federal Highway Administration (FHWA)



Local Lead Agency:  
Arizona Department of Transportation



Alternatives Selection  
Report (ASR) and  
Tier 1 Environmental  
Impact Statement (EIS)



## Study Goal and Objective



Complete ASR and Tier 1 EIS



Reach consensus on  
Selected Corridor Alternative  
from Nogales to Wickenburg

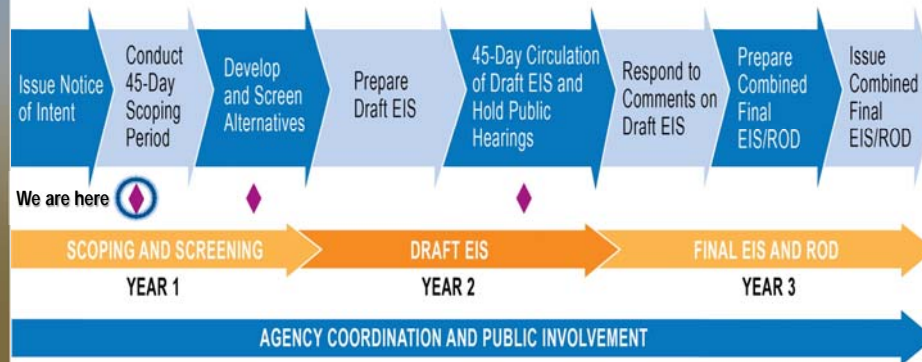


Set stage for future  
proposed projects



# Environmental Review Process

## Tier 1 Environmental Impact Statement Process



◆ Official Agency and Public Opportunity for Comment during Tier 1 EIS Process

EIS = Environmental Impact Statement

ROD = Record of Decision



## What is Scoping?

- **Early step in environmental review process**
  - ▶ Allows for early coordination and outreach
- **Notify public, agencies, and tribal communities**
  - ▶ Tier 1 EIS is being prepared
  - ▶ Solicit input on overall process and corridor
- **Guide “scope” and content of Tier 1 EIS**
  - ▶ Purpose and need
  - ▶ Alternatives to be studied
  - ▶ Impacts to be evaluated
  - ▶ Evaluation methods to be used





## What are the Goals for I-11?

- Provide access-controlled, north-south transportation corridor
- Connect key metropolitan areas and markets in Arizona with Mexico and Canada
- Support improved regional mobility for movement of people, goods, and homeland security
- Provide enhanced transportation opportunities for economic vitality

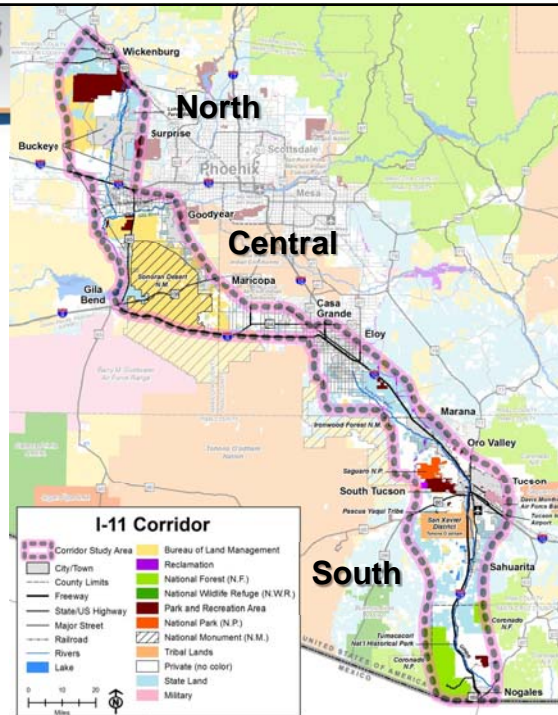
ADOT



## What is being Studied?

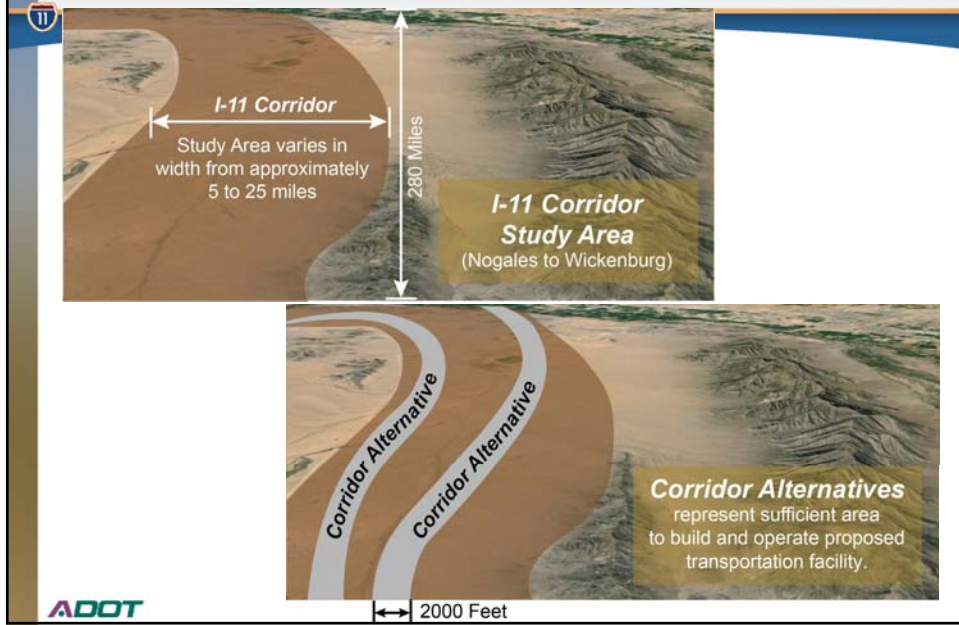
- 280-mile study area from Nogales to Wickenburg
- 2,000-foot corridor alternatives
- Proposed transportation facility
- Phased Implementation Plans

ADOT

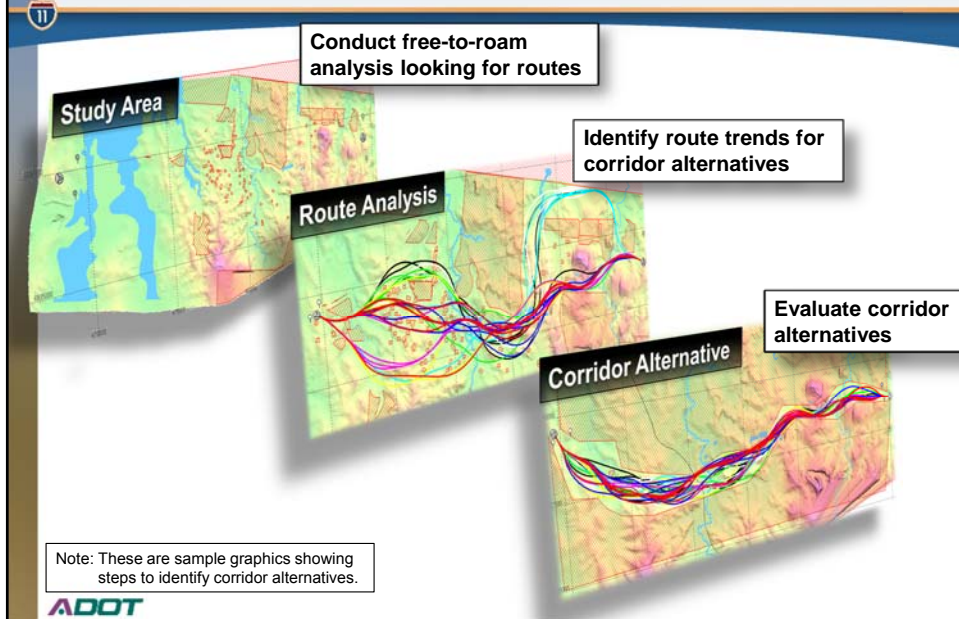




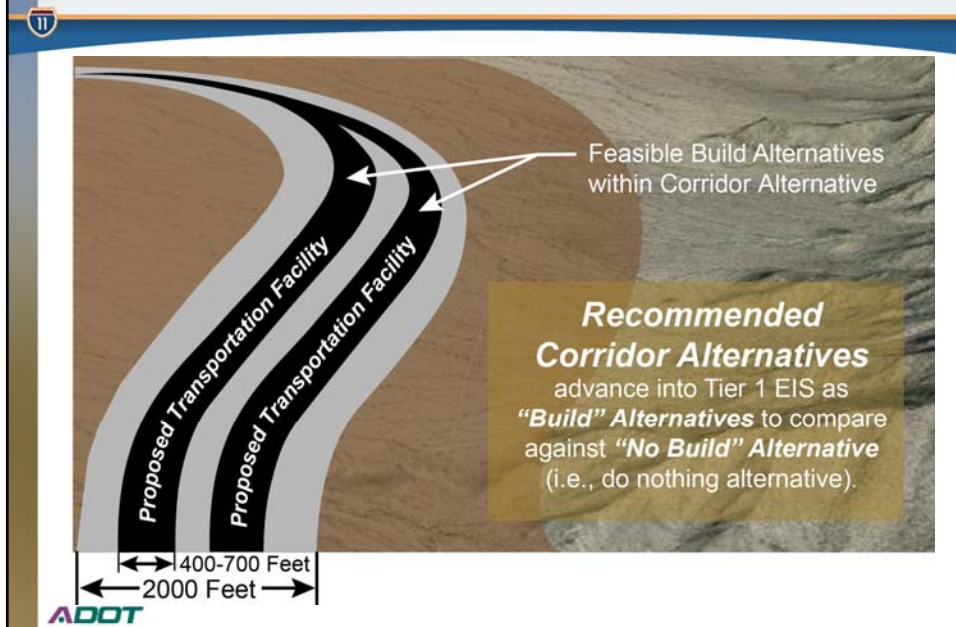
# Corridor Alternatives



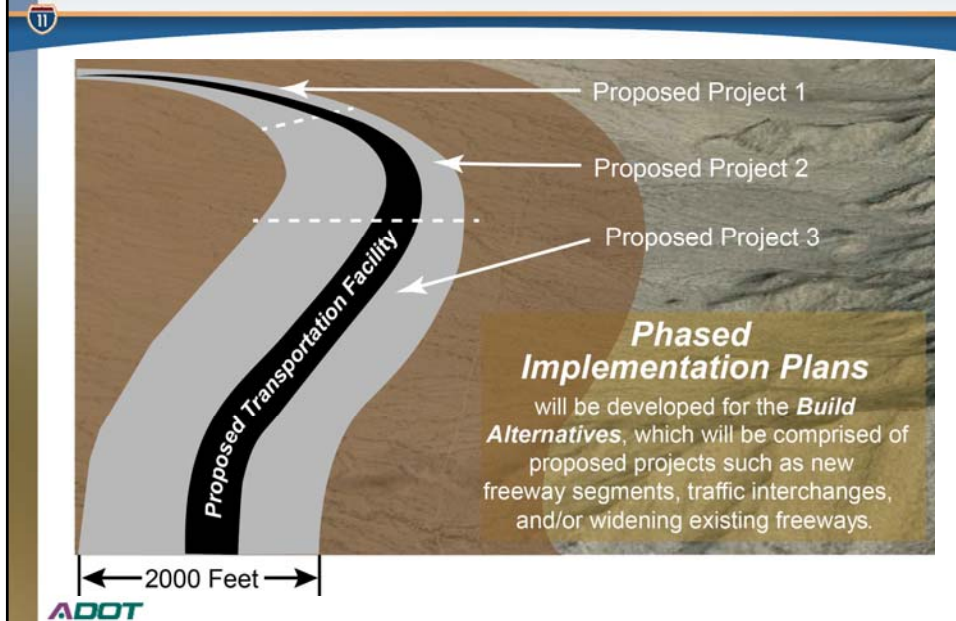
# Identifying Corridor Alternatives



## Recommended Corridor Alternatives



## Phased Implementation Plans



# What Topics will be Studied?



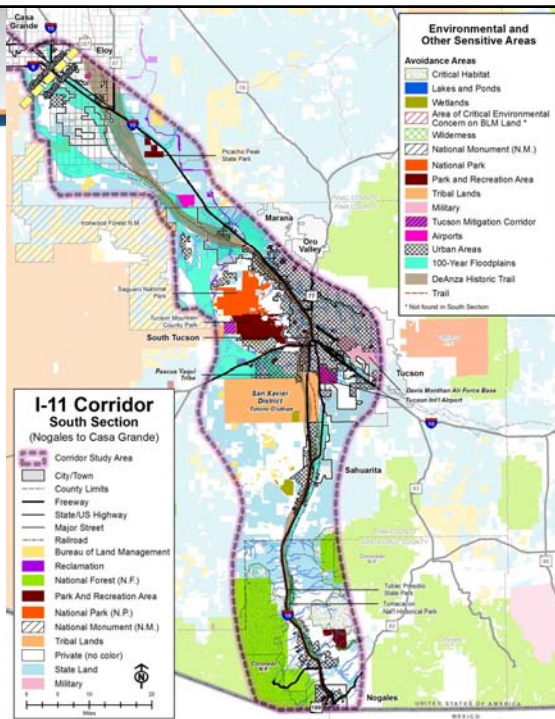
- Air quality
- Biological resources
- Economic impacts
- Geology, soils, and farmlands
- Hazardous materials
- Historic and archaeological
- Land use and neighborhoods
- Noise and vibration
- Parks and recreation
- Title VI and environmental justice
- Transportation
- Visual and aesthetics
- Water resources



# South



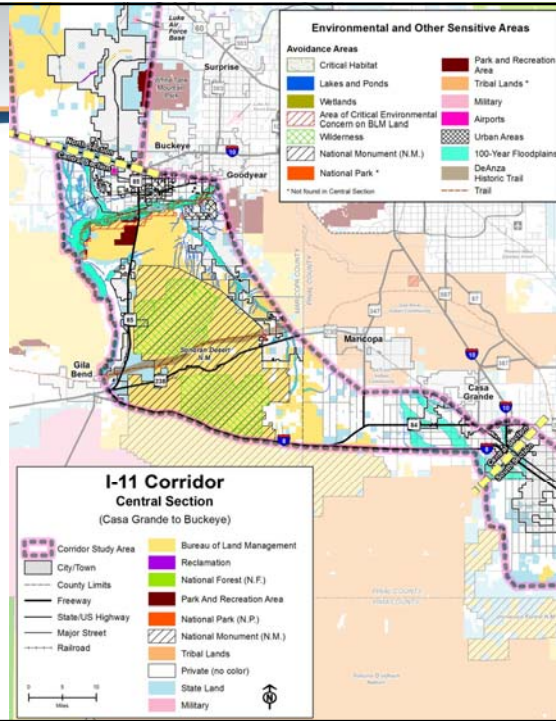
- Critical habitat
- Cultural resources
- Historic trail
- Parks and recreation
- Rivers and floodplains
- Tribal lands
- Urbanized areas
- Wildlife and mitigation corridors





# Central

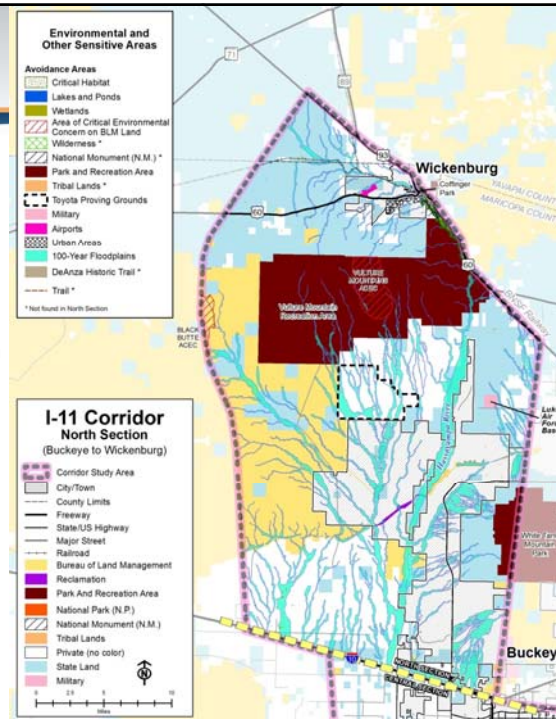
- Areas of critical environmental concern
- Cultural resources
- Historic trail
- National monument
- Parks and recreation
- Rivers and floodplains
- Wilderness



ADOT

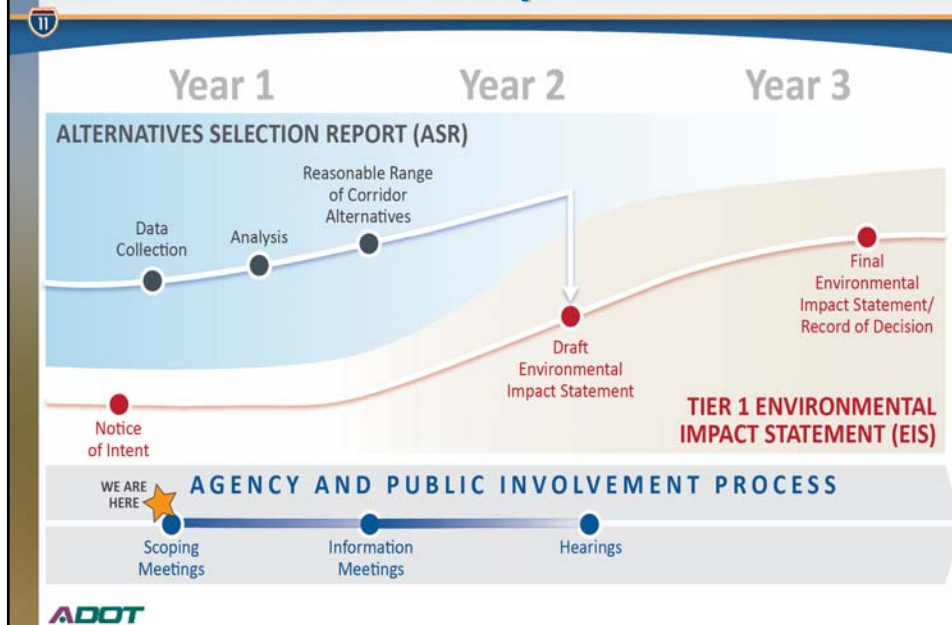
# North

- Areas of critical environmental concern
- Cultural resources
- Parks and recreation
- Rivers and floodplains
- Other avoidance areas



ADOT

## What are Next Steps?



## What Questions will the Tier 1 EIS Answer?

- **Reach consensus on *Selected Corridor Alternative* for I-11 Corridor**
  - ▶ Potential social, economic, and natural environmental impacts
  - ▶ Type of vehicular transportation facility
  - ▶ Potential multimodal facility (rail and utility) opportunities
  - ▶ Proposed projects for Phased Implementation Plan

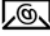



*The Tier 1 EIS will provide a roadmap for advancing proposed projects in the future.*

# How Can You Participate?

## ■ Scoping meetings

- ▶ Review information on display boards and handouts
- ▶ Provide written comments on comment cards
- ▶ Provide comments verbally to court reporter

## ■ Additional opportunities

-  I-11ADOTStudy@hdrinc.com
-  1-844-544-8049 (bilingual)
-  i11study.com/Arizona (on-line survey)
-  Interstate 11 Tier 1 EIS Study Team  
c/o ADOT Communications  
1655 W. Jackson Street, Mail Drop 126F  
Phoenix, AZ 85007

## ■ Future public meetings and hearings



**Please  
submit  
scoping  
comments  
by  
July 8, 2016**



# I-11 Corridor

Tier 1 Environmental Impact Statement

THANK YOU!!







# Potential Topics and Environmental Issues

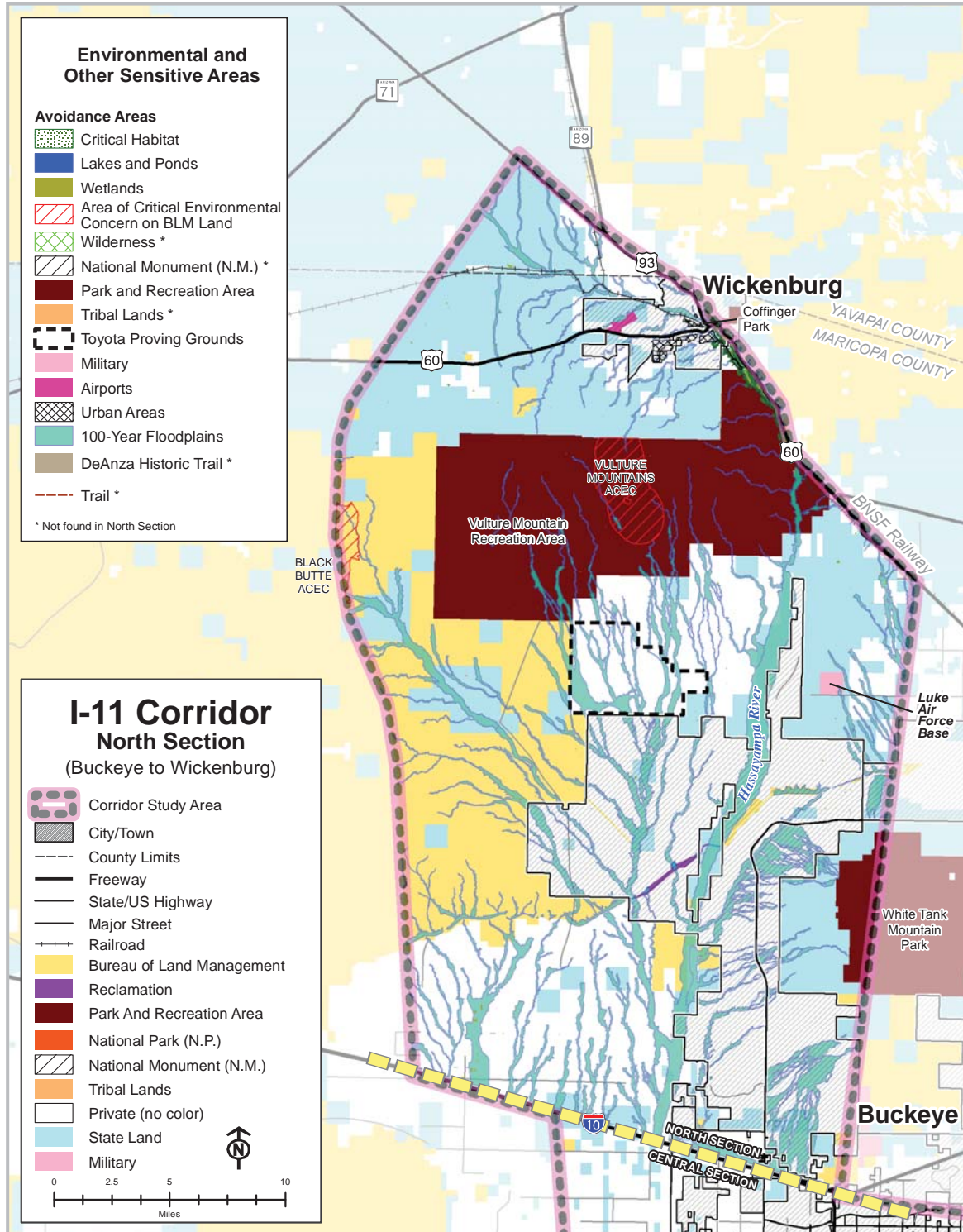
The Tier 1 EIS will document technical analysis conducted on a number of potential topics and environmental issues. Help us identify areas or resources that you feel must be avoided or are important to serve.







# North Section

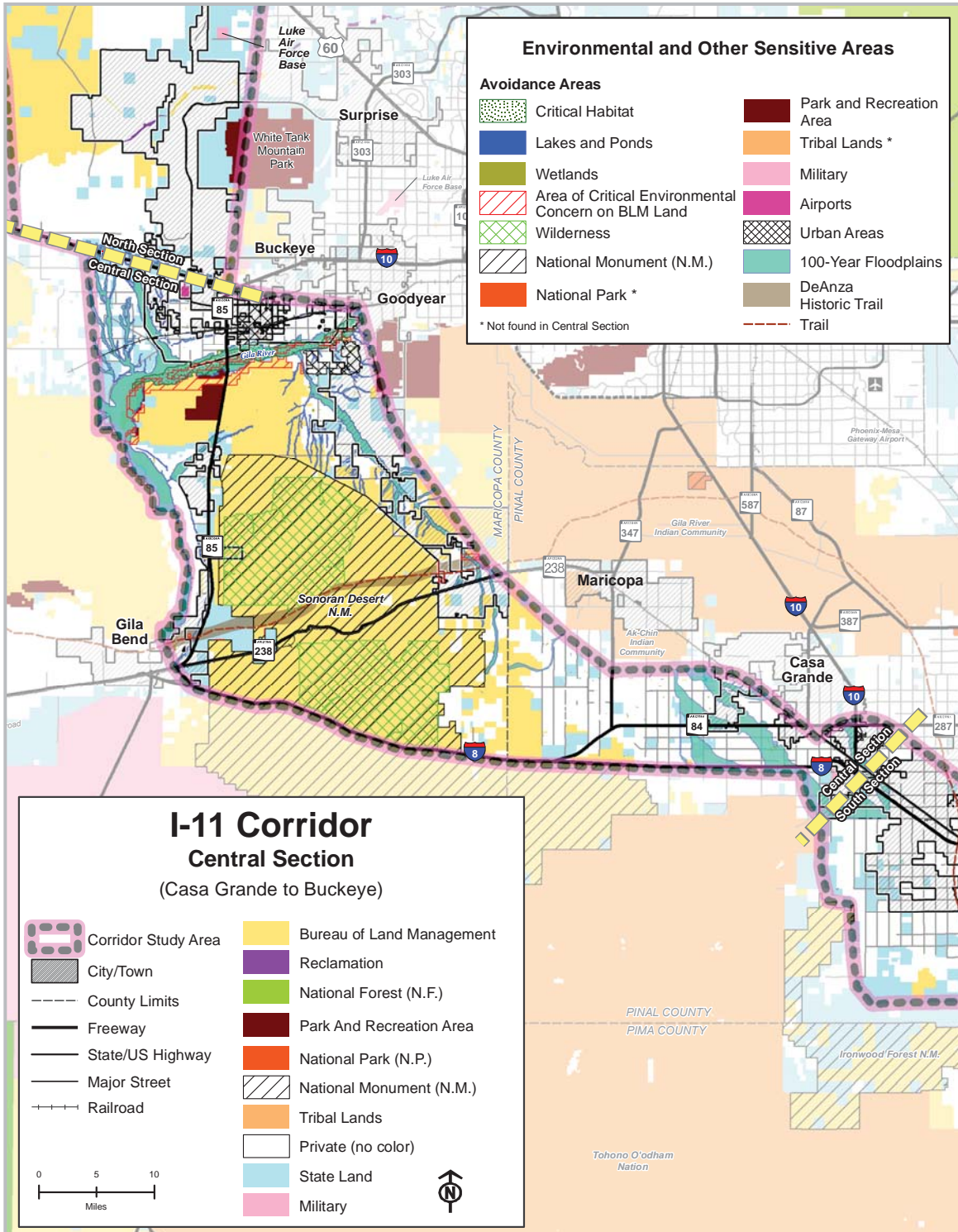


ALL INFORMATION PRESENTED IS PRELIMINARY AND SUBJECT TO REVISION

June 2016



# Central Section



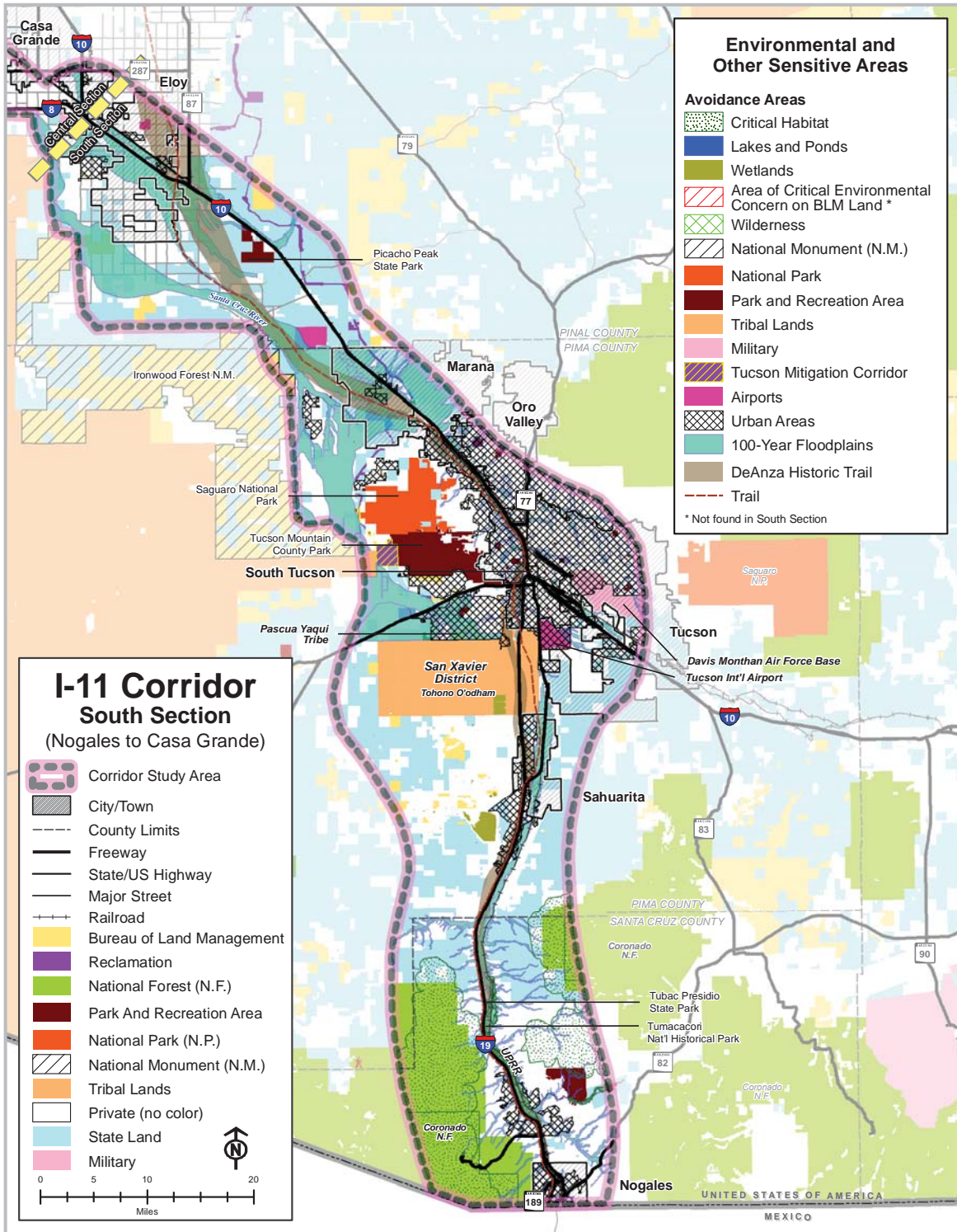
ALL INFORMATION PRESENTED IS PRELIMINARY AND SUBJECT TO REVISION

June 2016





# South Section



ALL INFORMATION PRESENTED IS PRELIMINARY AND SUBJECT TO REVISION

June 2016

## I-11 Corridor Tier 1 Environmental Impact Statement

### What is a Tier 1 EIS?

The Federal Highway Administration (FHWA) and Arizona Department of Transportation (ADOT) are initiating the environmental review process for the Interstate 11 (I-11) Corridor from Nogales to Wickenburg, Arizona. An Alternatives Selection Report (ASR) and Tier 1 Environmental Impact Statement (EIS) are being prepared as part of this process in accordance with the National Environmental Policy Act (NEPA) and other regulatory requirements. This hand-out compares the level of analysis and compliance activities typically conducted for a programmatic Tier 1 EIS versus project level Tier 2 environmental reviews that would be conducted at a later date. In a tiered process, Tier 2 would be similar to a traditional project level NEPA review.

- **Tier 1 Environmental Impact Statement:** Analyzes a *program, large project, or undefined corridor* on a broad scale.
- **Tier 2 Environmental Reviews:** Involves a *specific project* and applicable NEPA class of action that could include an EIS, Environmental Assessment (EA), or Categorical Exclusion (CE), but focused on the corridor identified in the Tier 1 EIS document.

Activities	Tier 1 “Programmatic” EIS	Tier 2 “Project” Environmental Reviews
<b>NEPA Class of Action</b>	<b>Tier 1 EIS</b>	<b>EIS, EA, or CE</b>
<b>Purpose and Need</b>	<ul style="list-style-type: none"> <li>• Refine purpose and need from prior feasibility study</li> <li>• Consider federal, state, regional, and local needs</li> </ul>	<ul style="list-style-type: none"> <li>• Refine purpose and need from Tier 1</li> <li>• Address needs specific to proposed project</li> </ul>
<b>Alternatives</b>	<ul style="list-style-type: none"> <li>• Develop, evaluate, and screen corridor alternatives</li> <li>• Identify types of proposed transportation facility</li> </ul>	<ul style="list-style-type: none"> <li>• Define project alignment and configuration</li> <li>• Identify potential design options</li> </ul>
<b>Engineering</b>	<ul style="list-style-type: none"> <li>• Very conceptual design</li> <li>• Typical sections for proposed transportation facility</li> <li>• Phased Implementation Plan for smaller proposed projects</li> </ul>	<ul style="list-style-type: none"> <li>• More refined engineering</li> <li>• Detailed drawings, vertical profiles, and typical sections</li> <li>• Access details and interchange design</li> </ul>
<b>Analysis</b>	<ul style="list-style-type: none"> <li>• Broad, high-level</li> <li>• Relies heavily on readily available information</li> <li>• Primarily geographic information system (GIS) based</li> </ul>	<ul style="list-style-type: none"> <li>• Site-specific resource information, impacts, and mitigation</li> </ul>
<b>Agency and Public Input</b>	<ul style="list-style-type: none"> <li>• Identify key issues early</li> <li>• Build consensus</li> </ul>	<ul style="list-style-type: none"> <li>• Established relationships</li> <li>• No surprises</li> </ul>
<b>Proposed Action</b>	<ul style="list-style-type: none"> <li>• Select Preferred Corridor Alternative (2000 feet wide)</li> <li>• Proposed transportation facility</li> <li>• Phased Implementation Plan</li> <li>• Mitigation strategies</li> </ul>	<ul style="list-style-type: none"> <li>• Select well-defined project alignment and configuration</li> <li>• Right-of-way (ROW) requirements</li> <li>• Specific mitigation commitments</li> </ul>
<b>Other Regulatory Compliance</b>	<b>Information Obtained from Existing Sources / Agencies Involved</b>	<b>Detailed Studies and Impact Assessments / Agency Actions</b>
<b>Endangered Species Act</b>	<ul style="list-style-type: none"> <li>• Minimize impacts to critical habitat for protected species</li> <li>• Strategies for mitigation commitments</li> <li>• United States Fish and Wildlife Service (USFWS) and Arizona Game and Fish Department (AGFD)</li> </ul>	<ul style="list-style-type: none"> <li>• Presence/absence surveys, species protocol surveys, additional field studies, and Biological Assessments</li> <li>• Specific mitigation commitments</li> <li>• USFWS action to provide concurrence</li> </ul>
<b>National Historic Preservation Act</b>	<ul style="list-style-type: none"> <li>• Avoid potential high sensitivity cultural resources (i.e., historic and archaeological)</li> <li>• Arizona State Historic Preservation Office (SHPO), Tribes and other Consulting Parties to develop Section 106 Programmatic Agreement (PA)</li> </ul>	<ul style="list-style-type: none"> <li>• Implement PA from Tier 1</li> <li>• Historic and archaeological surveys</li> <li>• Determinations of National Register of Historic Places (NRHP) eligibility</li> <li>• Identify and resolve potential effects among SHPO, Tribes, and other Consulting Parties</li> </ul>
<b>Sections 4(f)/6(f)</b>	<ul style="list-style-type: none"> <li>• Identify Section 4(f) resources (i.e., publicly owned parks, recreation areas, refuges, and historic sites)</li> <li>• Identify Section 6(f) properties (i.e., established with Land and Water Conservation Funds)</li> <li>• National Park Service (NPS), SHPO, and other officials with jurisdiction</li> </ul>	<ul style="list-style-type: none"> <li>• Detailed Section 4(f) evaluation to determine avoidance, <i>de minimis</i>, or “use” determinations by FHWA in coordination with officials with jurisdiction</li> <li>• Potential acquisition and conversion of 6(f) land to transportation use in agreement with NPS, Bureau of Land Management (BLM), and other agencies</li> </ul>
<b>Clean Water Act</b>	<ul style="list-style-type: none"> <li>• Minimize impacts to Waters of the US, surface waters, and 100-year floodplains</li> <li>• Mitigation strategies</li> <li>• United States Army Corps of Engineers (USACE) and Arizona Department of Environmental Quality (ADEQ)</li> </ul>	<ul style="list-style-type: none"> <li>• Delineate Waters of the US, identify ordinary high water mark, and determine mitigation</li> <li>• Stormwater runoff and drainage requirements</li> <li>• Potential USACE and ADEQ actions</li> </ul>
<b>Clean Air Act</b>	<ul style="list-style-type: none"> <li>• Identify non-attainment areas and ambient air quality data</li> <li>• United States Environmental Protection Agency (USEPA) and ADEQ</li> </ul>	<ul style="list-style-type: none"> <li>• Project level hot-spot and air quality conformity analyses</li> <li>• Potential USEPA and ADEQ actions</li> </ul>
<b>Permit Requirements</b>	<b>During Tier 1 EIS</b>	<b>Future Tier 2</b>
<b>General Permits</b>	<ul style="list-style-type: none"> <li>• Identify likely permits and requirements in coordination and consultation with agencies</li> </ul>	<ul style="list-style-type: none"> <li>• Provide information to support permit applications with agencies</li> </ul>



Corridor Alternatives Development and Environmental Review Process

